

IHC*easy* ALDH3A1 Ready-To-Use IHC Kit

Catalog Number: **KHC0690**

General Information

Sample type:
FFPE tissue
Cited sample type:
Reactivity:
Human
Cited Reactivity:

Assay type:
Immunohistochemistry
Primary antibody type:
Mouse Monoclonal
Secondary antibody type:
Polymer-HRP-Goat anti-Mouse

Kit Component

Component	Size	Concentration
Antigen Retrieval Buffer	100 mL	50×
Washing Buffer	100 mL ×2	20×
Blocking Buffer	5 mL	RTU
Primary Antibody	5 mL	RTU
Secondary Antibody	5 mL	RTU
Chromogen Component A	0.2 mL	RTU
Chromogen Component B	4 mL	RTU
Signal Enhancer	5 mL	RTU
Counter Staining Reagent	5 mL	RTU
Mounting Media	5 mL	RTU
Control Slide	1 slide (Optional)	FFPE
Datasheet	1 Copy	
Manual	1 Copy	

Storage Instructions

All the reagents are stored at 2-8°C. The kit is stable for 6 months from the date of receipt.

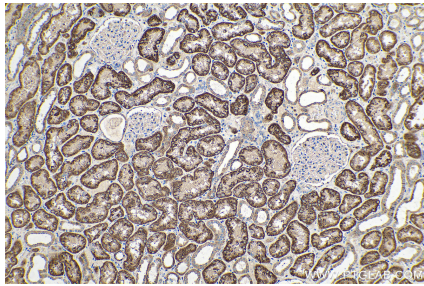
Background

ALDH3A1 (Aldehyde dehydrogenase, dimeric NADP-preferring), also named as ALDH3, is a member of the ALDH superfamily, which consists of NAD(P)⁺-dependent enzymes that catalyse the oxidation of a wide variety of endogenously produced and exogenous aldehydes to their corresponding acids. It is expressed at high concentrations in the mammalian cornea and it is believed that it protects this vital tissue and the rest of the eye against UVlight-induced damage. It can exist as a dimer.

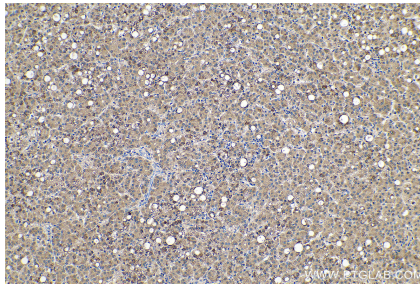
Synonyms

Aldehyde dehydrogenase 3, ALDH3, ALDH3A1, ALDHIII

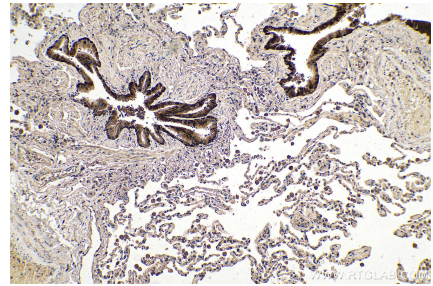
Selected Validation Data



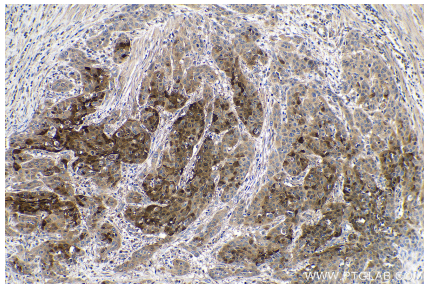
Immunohistochemical analysis of paraffin-embedded human kidney tissue slide using KHC0690 (ALDH3A1 IHC Kit).



Immunohistochemical analysis of paraffin-embedded human liver cancer tissue slide using KHC0690 (ALDH3A1 IHC Kit).



Immunohistochemical analysis of paraffin-embedded human lung tissue slide using KHC0690 (ALDH3A1 IHC Kit).



Immunohistochemical analysis of paraffin-embedded human oesophagus cancer tissue slide using KHC0690 (ALDH3A1 IHC Kit).