

# IHC*easy* FERMT2/Kindlin 2 Ready-To-Use IHC Kit

Catalog Number: **KHC0688**

## General Information

Sample type:  
FFPE tissue  
Cited sample type:  
Reactivity:  
Human, Mouse, Rat  
Cited Reactivity:

Assay type:  
Immunohistochemistry  
Primary antibody type:  
Rabbit Polyclonal  
Secondary antibody type:  
Polymer-HRP-Goat anti-Rabbit

## Kit Component

Component	Size	Concentration
Antigen Retrieval Buffer	100 mL	50×
Washing Buffer	100 mL ×2	20×
Blocking Buffer	5 mL	RTU
Primary Antibody	5 mL	RTU
Secondary Antibody	5 mL	RTU
Chromogen Component A	0.2 mL	RTU
Chromogen Component B	4 mL	RTU
Signal Enhancer	5 mL	RTU
Counter Staining Reagent	5 mL	RTU
Mounting Media	5 mL	RTU
Control Slide	1 slide (Optional)	FFPE
Datasheet	1 Copy	
Manual	1 Copy	

## Storage Instructions

All the reagents are stored at 2-8°C. The kit is stable for 6 months from the date of receipt.

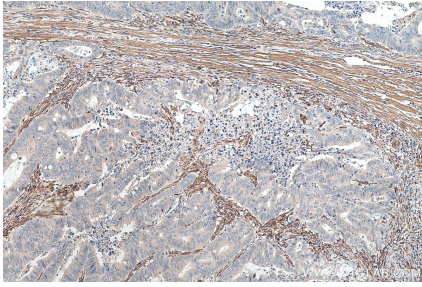
## Background

FERMT2, also named as KIND2, MIG2, PLEKHC1, MIG-2 and Kindlin-2, belongs to the kindlin family. There are three FERMT2 isoforms that participate in the connection between extracellular matrix (ECM) adhesion sites and the actin cytoskeleton and also in the orchestration of actin assembly and cell shape modulation. FERMT2 recruits migfilin (FBLP1) protein to cell-ECM focal adhesion sites. Variable expression in human cancers and mesenchymal cancer invasion are now linked with FERMT2, which may plays important role in carcinomas development.

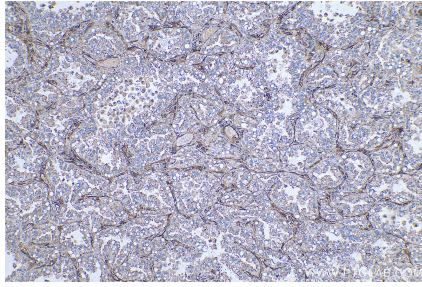
## Synonyms

Fermitin family homolog 2, FERMT2, KIND2, Kindlin 2, mig 2, MIG2, PLEKHC1, UNC112, UNC112B

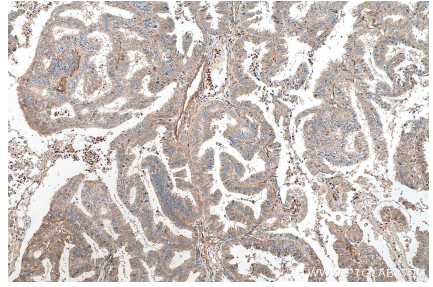
## Selected Validation Data



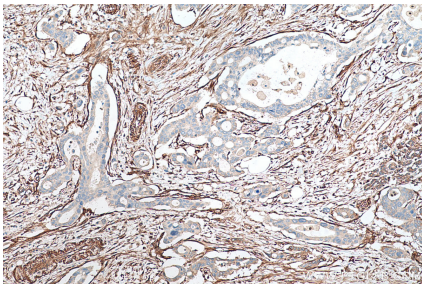
Immunohistochemical analysis of paraffin-embedded human colon cancer tissue slide using KHC0688 (FERMT2/Kindlin 2 IHC Kit).



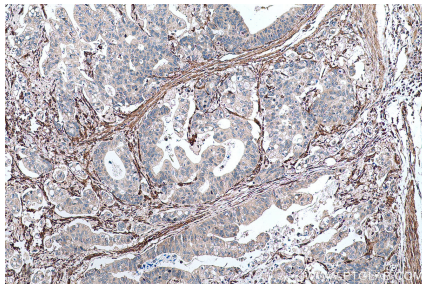
Immunohistochemical analysis of paraffin-embedded human lung cancer tissue slide using KHC0688 (FERMT2/Kindlin 2 IHC Kit).



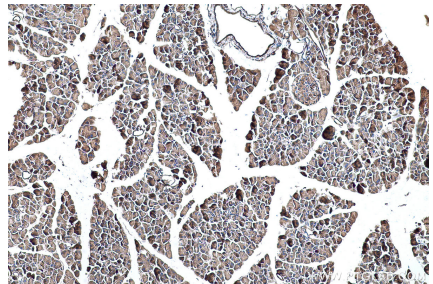
Immunohistochemical analysis of paraffin-embedded human ovary tumor tissue slide using KHC0688 (FERMT2/Kindlin 2 IHC Kit).



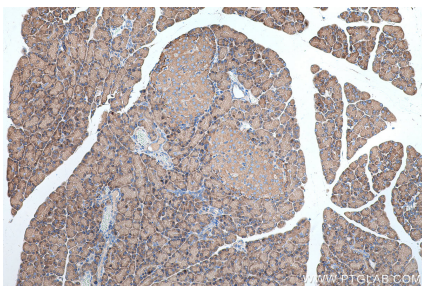
Immunohistochemical analysis of paraffin-embedded human pancreas cancer tissue slide using KHC0688 (FERMT2/Kindlin 2 IHC Kit).



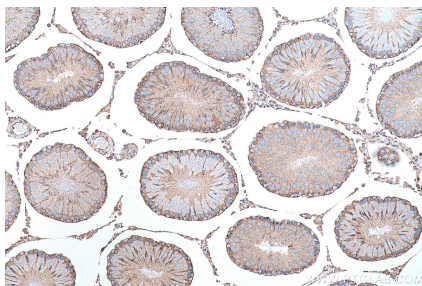
Immunohistochemical analysis of paraffin-embedded human stomach cancer tissue slide using KHC0688 (FERMT2/Kindlin 2 IHC Kit).



Immunohistochemical analysis of paraffin-embedded mouse pancreas tissue slide using KHC0688 (FERMT2/Kindlin 2 IHC Kit).



Immunohistochemical analysis of paraffin-embedded rat pancreas tissue slide using KHC0688 (FERMT2/Kindlin 2 IHC Kit).



Immunohistochemical analysis of paraffin-embedded rat testis tissue slide using KHC0688 (FERMT2/Kindlin 2 IHC Kit).