

# IHC*easy* WWOX Ready-To-Use IHC Kit

Catalog Number: **KHC0651**

## General Information

Sample type:  
FFPE tissue  
Cited sample type:  
Reactivity:  
Human, Mouse, Rat  
Cited Reactivity:

Assay type:  
Immunohistochemistry  
Primary antibody type:  
Mouse Monoclonal  
Secondary antibody type:  
Polymer-HRP-Goat anti-Mouse

## Kit Component

Component	Size	Concentration
Antigen Retrieval Buffer	100 mL	50×
Washing Buffer	100 mL ×2	20×
Blocking Buffer	5 mL	RTU
Primary Antibody	5 mL	RTU
Secondary Antibody	5 mL	RTU
Chromogen Component A	0.2 mL	RTU
Chromogen Component B	4 mL	RTU
Signal Enhancer	5 mL	RTU
Counter Staining Reagent	5 mL	RTU
Mounting Media	5 mL	RTU
Control Slide	1 slide (Optional)	FFPE
Datasheet	1 Copy	
Manual	1 Copy	

## Storage Instructions

All the reagents are stored at 2-8°C. The kit is stable for 6 months from the date of receipt.

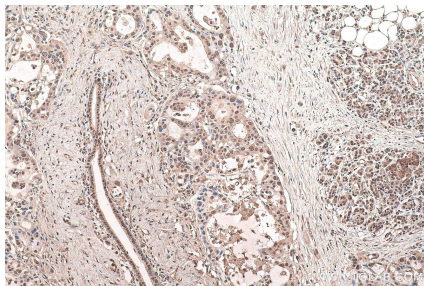
## Background

WWOX(WW domain-containing oxidoreductase) is also named as FOR, WOX1 and belongs to the short-chain dehydrogenases/reductases (SDR) family. The gene encodes a protein that contains two WW domains and a short-chain dehydrogenase/reductase domain and the protein is lost or reduced in the majority of many cancer types including breast, prostate, esophageal, lung, stomach, and pancreatic carcinomas and in a large fraction of other cancer types. WWOX behaves as a potential tumor-suppressor gene. It has 7 isoforms produced by alternative splicing.

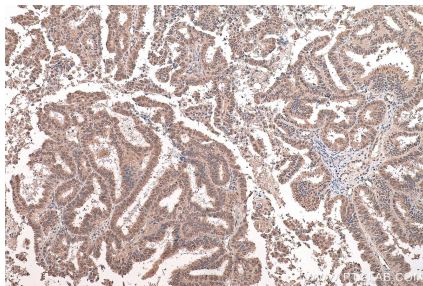
## Synonyms

D16S432E, FOR, FRA16D, HHCMA56, PRO0128, SDR41C1, WOX1, WWOX

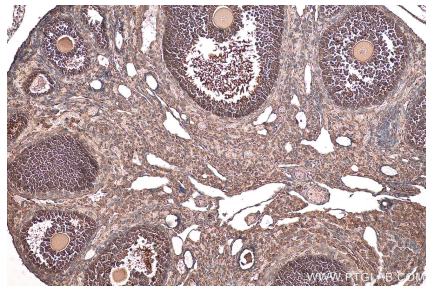
## Selected Validation Data



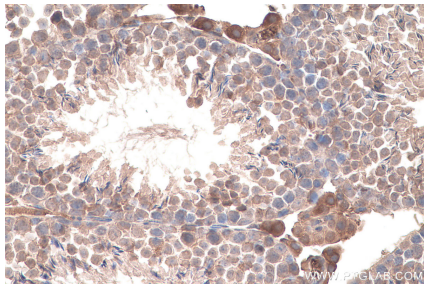
Immunohistochemical analysis of paraffin-embedded human pancreas cancer tissue slide using KHC0651 (WWOX IHC Kit).



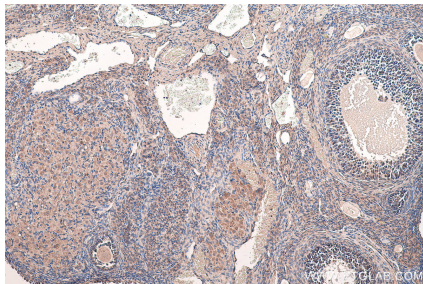
Immunohistochemical analysis of paraffin-embedded human ovary tumor tissue slide using KHC0651 (WWOX IHC Kit).



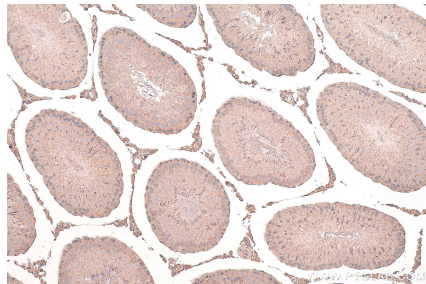
Immunohistochemical analysis of paraffin-embedded mouse ovary tissue slide using KHC0651 (WWOX IHC Kit).



Immunohistochemical analysis of paraffin-embedded mouse testis tissue slide using KHC0651 (WWOX IHC Kit).



Immunohistochemical analysis of paraffin-embedded rat ovary tissue slide using KHC0651 (WWOX IHC Kit).



Immunohistochemical analysis of paraffin-embedded rat testis tissue slide using KHC0651 (WWOX IHC Kit).