

IHC*easy* HSPA13 Ready-To-Use IHC Kit

Catalog Number: **KHC0626**

General Information

Sample type:
FFPE tissue
Cited sample type:
Reactivity:
Human, Mouse, Rat
Cited Reactivity:

Assay type:
Immunohistochemistry
Primary antibody type:
Rabbit Polyclonal
Secondary antibody type:
Polymer-HRP-Goat anti-Rabbit

Kit Component

Component	Size	Concentration
Antigen Retrieval Buffer	100 mL	50×
Washing Buffer	100 mL ×2	20×
Blocking Buffer	5 mL	RTU
Primary Antibody	5 mL	RTU
Secondary Antibody	5 mL	RTU
Chromogen Component A	0.2 mL	RTU
Chromogen Component B	4 mL	RTU
Signal Enhancer	5 mL	RTU
Counter Staining Reagent	5 mL	RTU
Mounting Media	5 mL	RTU
Control Slide	1 slide (Optional)	FFPE
Datasheet	1 Copy	
Manual	1 Copy	

Storage Instructions

All the reagents are stored at 2-8°C. The kit is stable for 6 months from the date of receipt.

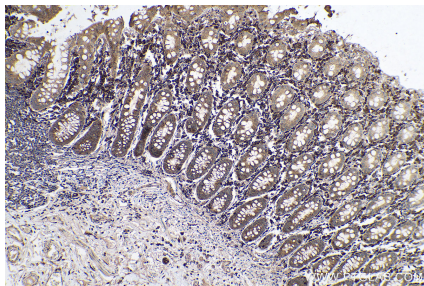
Background

HSPA13 (Heat shock 70 kDa protein 13), also known as STCH (the stress 70 protein chaperone), is a member of the Hsp70 family of ATPase "stress" or "heat shock" proteins. Human STCH encodes a protein that is highly enriched in the ER. Recently it has been reported that overexpression of the HSPA13 gene reduces prion disease incubation time in mice.

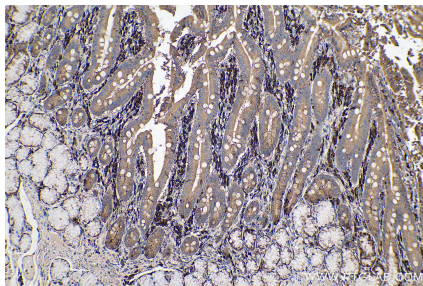
Synonyms

Heat shock 70 kDa protein 13, HSPA13, STCH

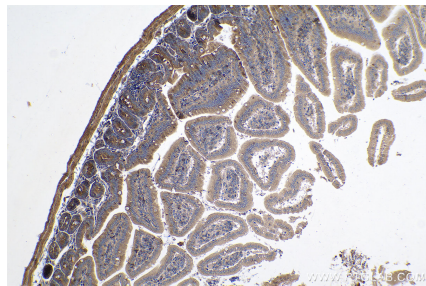
Selected Validation Data



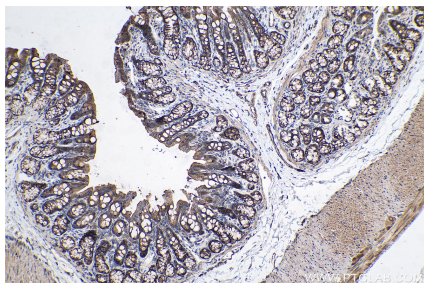
Immunohistochemical analysis of paraffin-embedded human colon tissue slide using KHC0626 (HSPA13 IHC Kit).



Immunohistochemical analysis of paraffin-embedded human stomach cancer tissue slide using KHC0626 (HSPA13 IHC Kit).



Immunohistochemical analysis of paraffin-embedded mouse small intestine tissue slide using KHC0626 (HSPA13 IHC Kit).



Immunohistochemical analysis of paraffin-embedded rat colon tissue slide using KHC0626 (HSPA13 IHC Kit).