

IHC*easy* ARPC1B Ready-To-Use IHC Kit

Catalog Number: **KHC0622**

General Information

Sample type:
FFPE tissue
Cited sample type:
Reactivity:
Human, Mouse
Cited Reactivity:

Assay type:
Immunohistochemistry
Primary antibody type:
Mouse Monoclonal
Secondary antibody type:
Polymer-HRP-Goat anti-Mouse

Kit Component

Component	Size	Concentration
Antigen Retrieval Buffer	100 mL	50×
Washing Buffer	100 mL ×2	20×
Blocking Buffer	5 mL	RTU
Primary Antibody	5 mL	RTU
Secondary Antibody	5 mL	RTU
Chromogen Component A	0.2 mL	RTU
Chromogen Component B	4 mL	RTU
Signal Enhancer	5 mL	RTU
Counter Staining Reagent	5 mL	RTU
Mounting Media	5 mL	RTU
Control Slide	1 slide (Optional)	FFPE
Datasheet	1 Copy	
Manual	1 Copy	

Storage Instructions

All the reagents are stored at 2-8°C. The kit is stable for 6 months from the date of receipt.

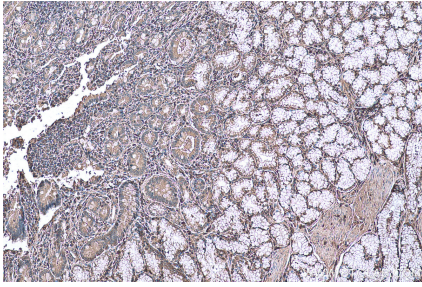
Background

ARPC1B also known as ARC41, p41-ARC, or p40-ARC, is one of seven subunits of the human Arp2/3 protein complex, that belongs to the SOP2 family. ARPC1B localizes on centrosomes and has a distinct role in centrosomal homeostasis. ARPC1B is both a physiological activator and substrate of Aurora A kinase, and these interactions help to maintain mitotic integrity in mammalian cells. In recent research, ARPC1B is selected as a candidate prediction marker for sensitivity of Choroidal malignant melanomas to radiotherapy.

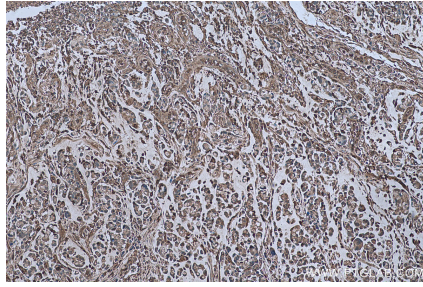
Synonyms

ARC41, Arp2/3 complex 41 kDa subunit, ARPC1B, p40 ARC, p41 ARC

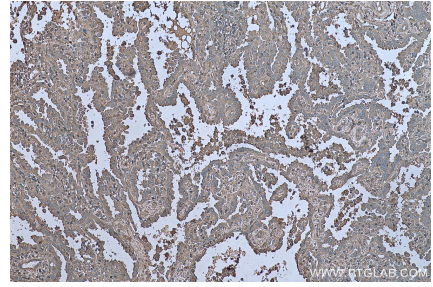
Selected Validation Data



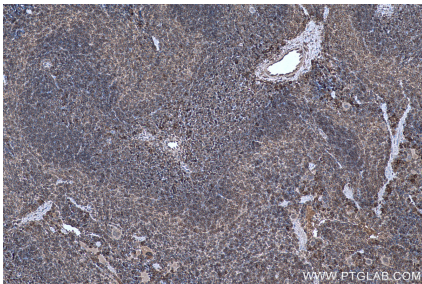
Immunohistochemical analysis of paraffin-embedded human stomach cancer tissue slide using KHC0622 (ARPC1B IHC Kit).



Immunohistochemical analysis of paraffin-embedded human colon cancer tissue slide using KHC0622 (ARPC1B IHC Kit).



Immunohistochemical analysis of paraffin-embedded human lung cancer tissue slide using KHC0622 (ARPC1B IHC Kit).



Immunohistochemical analysis of paraffin-embedded mouse spleen tissue slide using KHC0622 (ARPC1B IHC Kit).