

IHC*easy* Smoothelin/SMTN Ready-To-Use IHC Kit

Catalog Number: **KHC0597**

General Information

Sample type:
FFPE tissue
Cited sample type:
Reactivity:
Human, Mouse, Rat
Cited Reactivity:

Assay type:
Immunohistochemistry
Primary antibody type:
Rabbit Polyclonal
Secondary antibody type:
Polymer-HRP-Goat anti-Rabbit

Kit Component

Component	Size	Concentration
Antigen Retrieval Buffer	100 mL	50×
Washing Buffer	100 mL ×2	20×
Blocking Buffer	5 mL	RTU
Primary Antibody	5 mL	RTU
Secondary Antibody	5 mL	RTU
Chromogen Component A	0.2 mL	RTU
Chromogen Component B	4 mL	RTU
Signal Enhancer	5 mL	RTU
Counter Staining Reagent	5 mL	RTU
Mounting Media	5 mL	RTU
Control Slide	1 slide (Optional)	FFPE
Datasheet	1 Copy	
Manual	1 Copy	

Storage Instructions

All the reagents are stored at 2-8°C. The kit is stable for 6 months from the date of receipt.

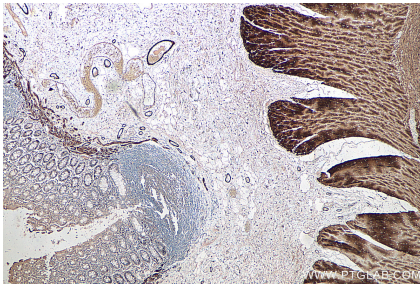
Background

SMTN, also named as Smoothelin, is a 917 amino acid protein, which contains 1 CH (calponin-homology) domain and belongs to the smoothelin family. SMTN as structural protein of the cytoskeleton involve in muscle organ development and smooth muscle contraction.

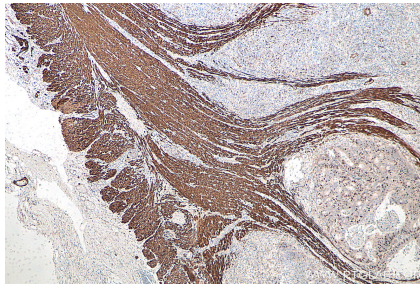
Synonyms

smoothelin, SMSMO, SMTN

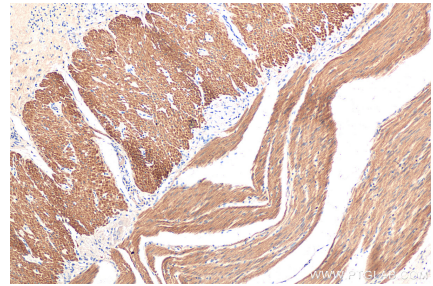
Selected Validation Data



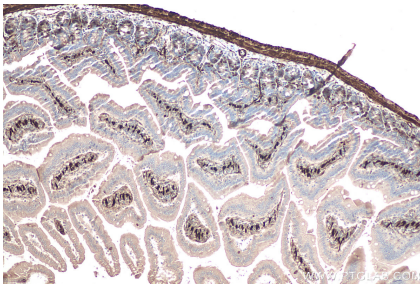
Immunohistochemical analysis of paraffin-embedded human colon tissue slide using KHC0597 (Smoothelin/SMTN IHC Kit).



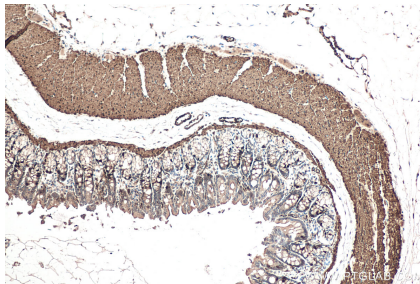
Immunohistochemical analysis of paraffin-embedded human colon cancer tissue slide using KHC0597 (Smoothelin/SMTN IHC Kit).



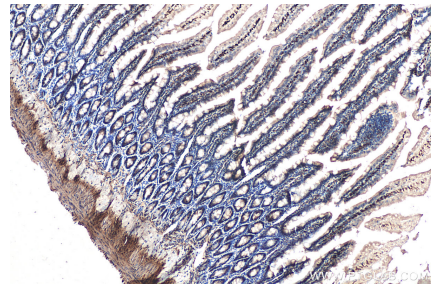
Immunohistochemical analysis of paraffin-embedded human small intestine tissue slide using KHC0597 (Smoothelin/SMTN IHC Kit).



Immunohistochemical analysis of paraffin-embedded mouse small intestine tissue slide using KHC0597 (Smoothelin/SMTN IHC Kit).



Immunohistochemical analysis of paraffin-embedded rat colon tissue slide using KHC0597 (Smoothelin/SMTN IHC Kit).



Immunohistochemical analysis of paraffin-embedded rat small intestine tissue slide using KHC0597 (Smoothelin/SMTN IHC Kit).