

IHCeasy[®] PDIA6 Ready-To-Use IHC Kit

Catalog Number: **KHC0579**

General Information

Sample type:
FFPE tissue
Cited sample type:
Reactivity:
Human, Mouse, Rat
Cited Reactivity:

Assay type:
Immunohistochemistry
Primary antibody type:
Mouse Monoclonal
Secondary antibody type:
Polymer-HRP-Goat anti-Mouse

Kit Component

Component	Size	Concentration
Antigen Retrieval Buffer	100 mL	50×
Washing Buffer	100 mL ×2	20×
Blocking Buffer	5 mL	RTU
Primary Antibody	5 mL	RTU
Secondary Antibody	5 mL	RTU
Chromogen Component A	0.2 mL	RTU
Chromogen Component B	4 mL	RTU
Signal Enhancer	5 mL	RTU
Counter Staining Reagent	5 mL	RTU
Mounting Media	5 mL	RTU
Control Slide	1 slide (Optional)	FFPE
Datasheet	1 Copy	
Manual	1 Copy	

Storage Instructions

All the reagents are stored at 2-8°C. The kit is stable for 6 months from the date of receipt.

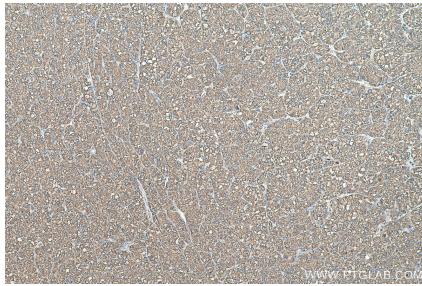
Background

PDIA6(Protein disulfide-isomerase A6) is also named as ERP5, P5, TXNDC7 and belongs to the protein disulfide isomerase family. It is one of the endoplasmic reticulum (ER) resident proteins that catalyze formation, reduction, and isomerization of disulfide bonds in proteins and are thought to play a role in folding of disulfide-bonded proteins. It has 2 isoforms produced by alternative splicing.

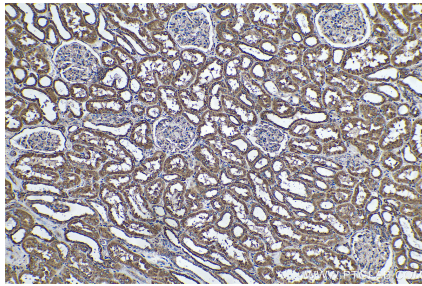
Synonyms

ER protein 5, ERP5, P5, PDIA6, Protein disulfide isomerase A6, Protein disulfide isomerase P5, TXNDC7

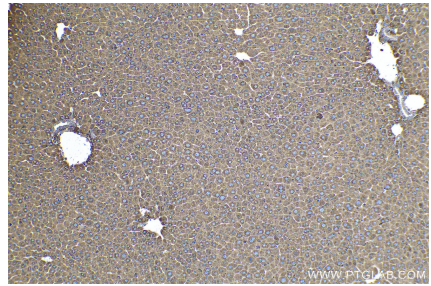
Selected Validation Data



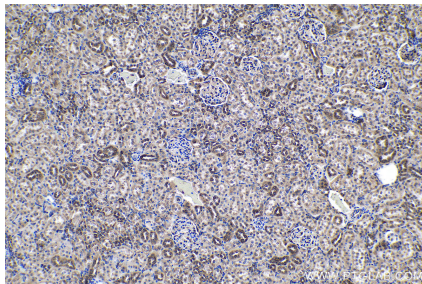
Immunohistochemical analysis of paraffin-embedded human liver cancer tissue slide using KHC0579 (PDIA6 IHC Kit).



Immunohistochemical analysis of paraffin-embedded human kidney tissue slide using KHC0579 (PDIA6 IHC Kit).



Immunohistochemical analysis of paraffin-embedded mouse liver tissue slide using KHC0579 (PDIA6 IHC Kit).



Immunohistochemical analysis of paraffin-embedded rat kidney tissue slide using KHC0579 (PDIA6 IHC Kit).