

# IHCeasy<sup>®</sup> HADH Ready-To-Use IHC Kit

Catalog Number: **KHC0552**

## General Information

Sample type:  
FFPE tissue  
Cited sample type:  
Reactivity:  
Human  
Cited Reactivity:

Assay type:  
Immunohistochemistry  
Primary antibody type:  
Rabbit Polyclonal  
Secondary antibody type:  
Polymer-HRP-Goat anti-Rabbit

## Kit Component

Component	Size	Concentration
Antigen Retrieval Buffer	100 mL	50×
Washing Buffer	100 mL ×2	20×
Blocking Buffer	5 mL	RTU
Primary Antibody	5 mL	RTU
Secondary Antibody	5 mL	RTU
Chromogen Component A	0.2 mL	RTU
Chromogen Component B	4 mL	RTU
Signal Enhancer	5 mL	RTU
Counter Staining Reagent	5 mL	RTU
Mounting Media	5 mL	RTU
Control Slide	1 slide (Optional)	FFPE
Datasheet	1 Copy	
Manual	1 Copy	

## Storage Instructions

All the reagents are stored at 2-8°C. The kit is stable for 6 months from the date of receipt.

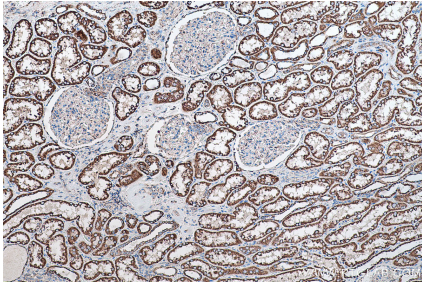
## Background

HADH(Hydroxyacyl-coenzyme A dehydrogenase, mitochondrial) is also named as HAD, HADHSC, SCHAD and belongs to the 3-hydroxyacyl-CoA dehydrogenase family. It catalyzes the reversible dehydrogenation of 3-hydroxyacyl-CoAs to their corresponding 3-ketoacyl-CoAs with concomitant reduction of NAD to NADH and exerts it highest activity toward 3-hydroxydecanoyl-CoA.

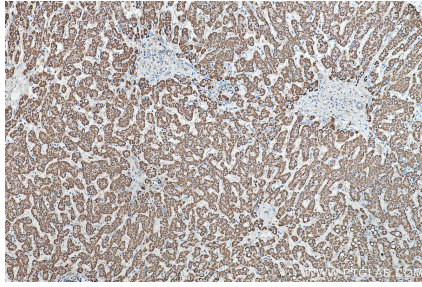
## Synonyms

HAD, HADH, HADH1, HADHSC, HCDH, HHF4, M/SCHAD, SCHAD

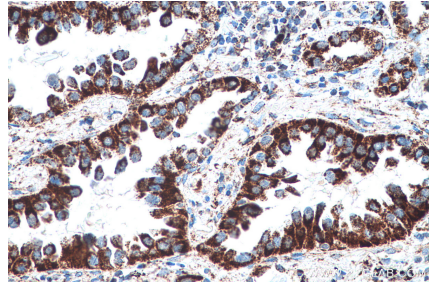
## Selected Validation Data



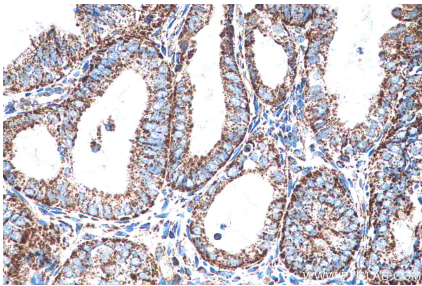
Immunohistochemical analysis of paraffin-embedded human kidney tissue slide using KHC0552 (HADH IHC Kit).



Immunohistochemical analysis of paraffin-embedded human liver cancer tissue slide using KHC0552 (HADH IHC Kit).



Immunohistochemical analysis of paraffin-embedded human lung cancer tissue slide using KHC0552 (HADH IHC Kit).



Immunohistochemical analysis of paraffin-embedded human ovary tumor tissue slide using KHC0552 (HADH IHC Kit).