

# IHCeasy<sup>®</sup> ADH1C Ready-To-Use IHC Kit

Catalog Number: **KHC0522**

## General Information

Sample type:  
FFPE tissue  
Cited sample type:  
Reactivity:  
Human, Mouse, Rat  
Cited Reactivity:

Assay type:  
Immunohistochemistry  
Primary antibody type:  
Rabbit Polyclonal  
Secondary antibody type:  
Polymer-HRP-Goat anti-Rabbit

## Kit Component

Component	Size	Concentration
Antigen Retrieval Buffer	100 mL	50×
Washing Buffer	100 mL ×2	20×
Blocking Buffer	5 mL	RTU
Primary Antibody	5 mL	RTU
Secondary Antibody	5 mL	RTU
Chromogen Component A	0.2 mL	RTU
Chromogen Component B	4 mL	RTU
Signal Enhancer	5 mL	RTU
Counter Staining Reagent	5 mL	RTU
Mounting Media	5 mL	RTU
Control Slide	1 slide (Optional)	FFPE
Datasheet	1 Copy	
Manual	1 Copy	

## Storage Instructions

All the reagents are stored at 2-8°C. The kit is stable for 6 months from the date of receipt.

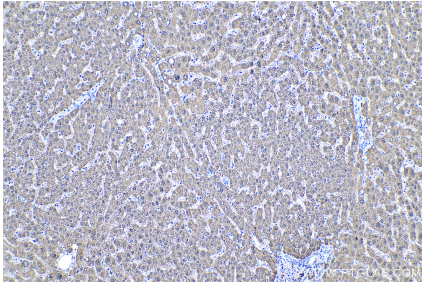
## Background

ADH1C (Alcohol dehydrogenase 1C) is also named as ADH3 and belongs to the zinc-containing alcohol dehydrogenase family. It catalyzes the rate-limiting step for ethanol metabolism: the oxidation of alcohol to acetaldehyde. The ADH1C gene is active in intestine and kidney in fetal and early postnatal life, and persists in the stomach and liver in adult life.

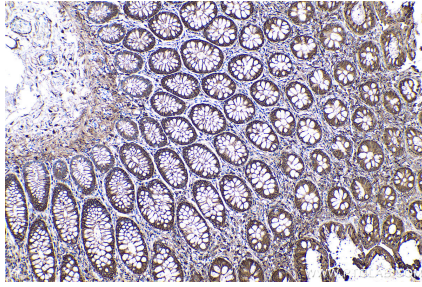
## Synonyms

ADH1C, Alcohol dehydrogenase 1C

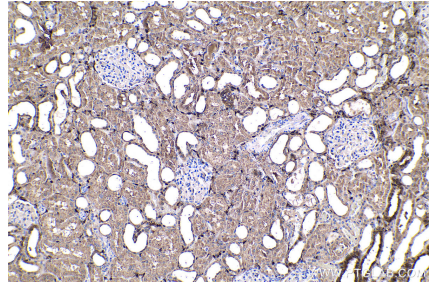
## Selected Validation Data



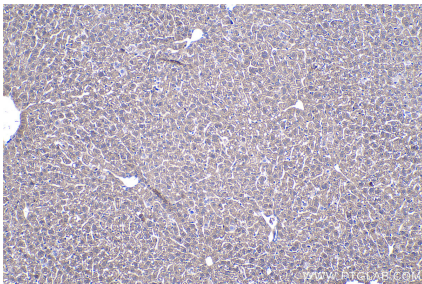
Immunohistochemical analysis of paraffin-embedded human liver tissue slide using KHC0522 (ADH1C IHC Kit).



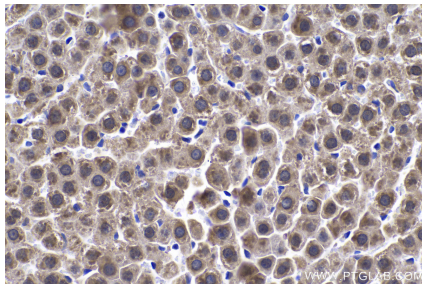
Immunohistochemical analysis of paraffin-embedded human colon tissue slide using KHC0522 (ADH1C IHC Kit).



Immunohistochemical analysis of paraffin-embedded human kidney tissue slide using KHC0522 (ADH1C IHC Kit).



Immunohistochemical analysis of paraffin-embedded mouse liver tissue slide using KHC0522 (ADH1C IHC Kit).



Immunohistochemical analysis of paraffin-embedded rat liver tissue slide using KHC0522 (ADH1C IHC Kit).