

IHC*easy* ATP5B Ready-To-Use IHC Kit

Catalog Number: **KHC0510**

General Information

Sample type:
FFPE tissue
Cited sample type:
Reactivity:
Human, Mouse, Rat
Cited Reactivity:

Assay type:
Immunohistochemistry
Primary antibody type:
Mouse Monoclonal
Secondary antibody type:
Polymer-HRP-Goat anti-Mouse

Kit Component

Component	Size	Concentration
Antigen Retrieval Buffer	100 mL	50×
Washing Buffer	100 mL ×2	20×
Blocking Buffer	5 mL	RTU
Primary Antibody	5 mL	RTU
Secondary Antibody	5 mL	RTU
Chromogen Component A	0.2 mL	RTU
Chromogen Component B	4 mL	RTU
Signal Enhancer	5 mL	RTU
Counter Staining Reagent	5 mL	RTU
Mounting Media	5 mL	RTU
Control Slide	1 slide (Optional)	FFPE
Datasheet	1 Copy	
Manual	1 Copy	

Storage Instructions

All the reagents are stored at 2-8°C. The kit is stable for 6 months from the date of receipt.

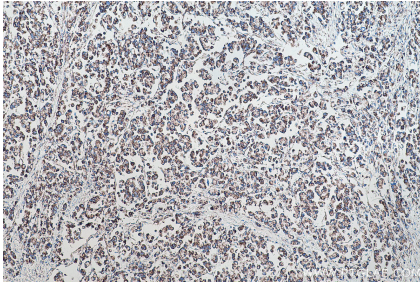
Background

ATP5B, also named as ATPMB and ATPSB, belongs to the ATPase alpha/beta chains family. It is a high affinity HDL receptor for apolipoprotein A1. ATP5B is a subunit of mitochondrial ATP synthase (F1FO ATP synthase or Complex V).

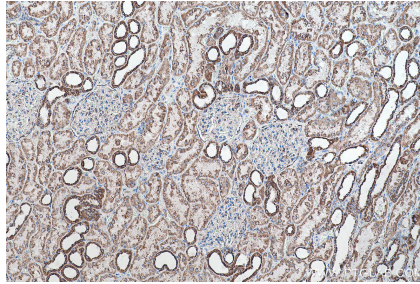
Synonyms

ATP5B, ATPB, ATPMB, ATPSB, Cell and organelle markers, Mitochondria Marker, Mitochondrial Marker, Mitochondrion Marker

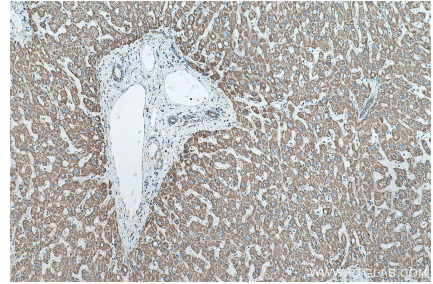
Selected Validation Data



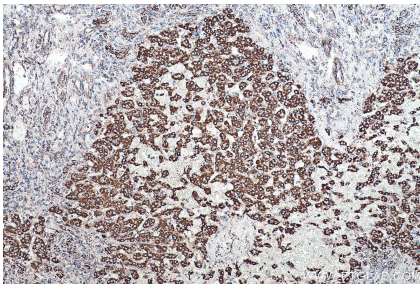
Immunohistochemical analysis of paraffin-embedded human colon cancer tissue slide using KHC0510 (ATP5B IHC Kit).



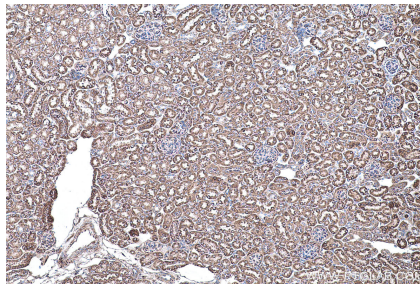
Immunohistochemical analysis of paraffin-embedded human kidney tissue slide using KHC0510 (ATP5B IHC Kit).



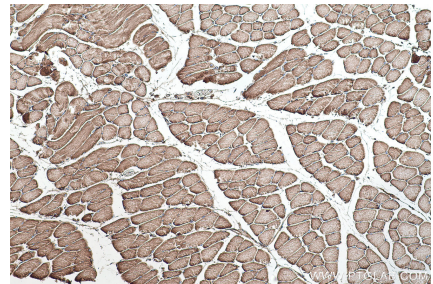
Immunohistochemical analysis of paraffin-embedded human liver tissue slide using KHC0510 (ATP5B IHC Kit).



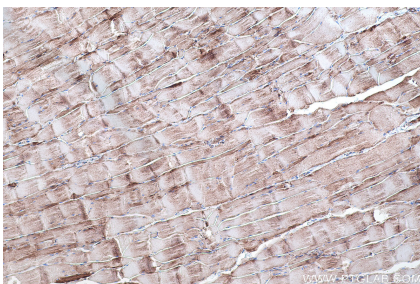
Immunohistochemical analysis of paraffin-embedded human liver cancer tissue slide using KHC0510 (ATP5B IHC Kit).



Immunohistochemical analysis of paraffin-embedded mouse kidney tissue slide using KHC0510 (ATP5B IHC Kit).



Immunohistochemical analysis of paraffin-embedded mouse skeletal muscle tissue slide using KHC0510 (ATP5B IHC Kit).



Immunohistochemical analysis of paraffin-embedded rat skeletal muscle tissue slide using KHC0510 (ATP5B IHC Kit).