

# IHC*easy* GAPDH Ready-To-Use IHC Kit

Catalog Number: **KHC0501**

## General Information

Sample type:  
FFPE tissue  
Cited sample type:  
Reactivity:  
Human, Mouse, Rat  
Cited Reactivity:

Assay type:  
Immunohistochemistry  
Primary antibody type:  
Mouse Monoclonal  
Secondary antibody type:  
Polymer-HRP-Goat anti-Mouse

## Kit Component

Component	Size	Concentration
Antigen Retrieval Buffer	100 mL	50×
Washing Buffer	100 mL ×2	20×
Blocking Buffer	5 mL	RTU
Primary Antibody	5 mL	RTU
Secondary Antibody	5 mL	RTU
Chromogen Component A	0.2 mL	RTU
Chromogen Component B	4 mL	RTU
Signal Enhancer	5 mL	RTU
Counter Staining Reagent	5 mL	RTU
Mounting Media	5 mL	RTU
Control Slide	1 slide (Optional)	FFPE
Datasheet	1 Copy	
Manual	1 Copy	

## Storage Instructions

All the reagents are stored at 2-8°C. The kit is stable for 6 months from the date of receipt.

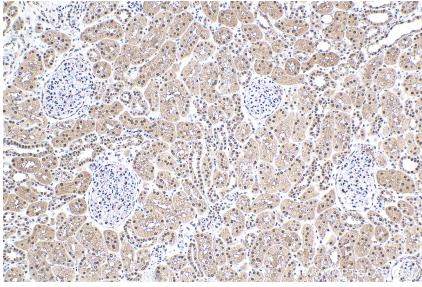
## Background

Glyceraldehyde-3-phosphate dehydrogenase (GAPDH) catalyzes the phosphorylation of glyceraldehyde-3-phosphate during glycolysis. GAPDH participates in nuclear events including transcription, binding RNA, RNA transportation, DNA replication, DNA repair and apoptosis. Being stably and constitutively expressed at high levels in most tissues and cells, GAPDH is considered a housekeeping protein. GAPDH is normally expressed in cellular cytoplasm or membrane, but can occasionally translocate to the nucleus after the addition of post-translational modifications such as S-nitrosylation. This antibody is raised against full length GAPDH of human origin. Please note that some physiological factors, such as hypoxia and diabetes, increase GAPDH expression in certain cell types.

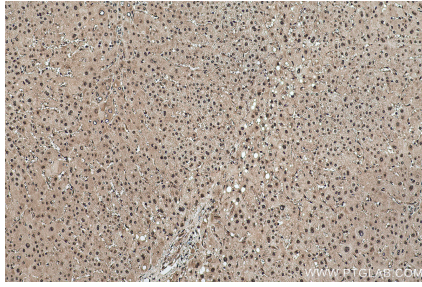
## Synonyms

G3PD, GAPD, GAPDH, OK/SW cL12

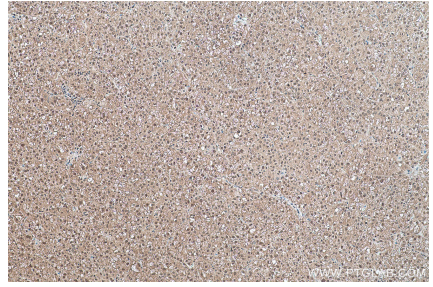
## Selected Validation Data



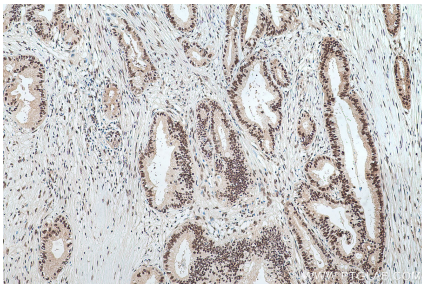
Immunohistochemical analysis of paraffin-embedded human kidney tissue slide using KHC0501 (GAPDH IHC Kit).



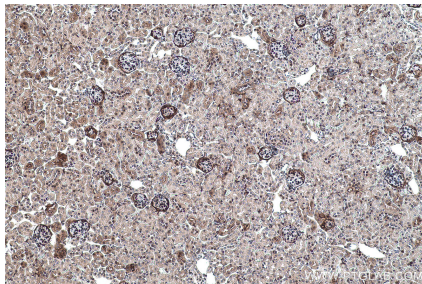
Immunohistochemical analysis of paraffin-embedded human liver tissue slide using KHC0501 (GAPDH IHC Kit).



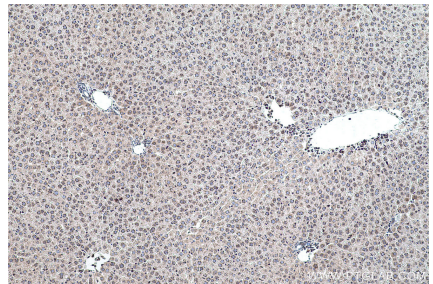
Immunohistochemical analysis of paraffin-embedded human liver cancer tissue slide using KHC0501 (GAPDH IHC Kit).



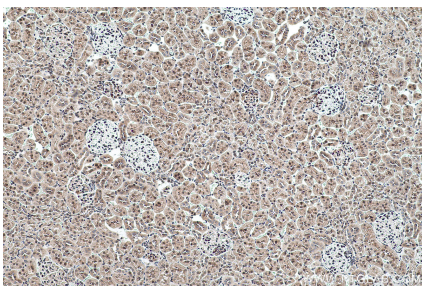
Immunohistochemical analysis of paraffin-embedded human pancreas cancer tissue slide using KHC0501 (GAPDH IHC Kit).



Immunohistochemical analysis of paraffin-embedded mouse kidney tissue slide using KHC0501 (GAPDH IHC Kit).



Immunohistochemical analysis of paraffin-embedded rat liver tissue slide using KHC0501 (GAPDH IHC Kit).



Immunohistochemical analysis of paraffin-embedded rat kidney tissue slide using KHC0501 (GAPDH IHC Kit).