

IHC*easy* PEBP1 Ready-To-Use IHC Kit

Catalog Number: **KHC0500**

General Information

Sample type:
FFPE tissue
Cited sample type:
Reactivity:
Human, Rat
Cited Reactivity:

Assay type:
Immunohistochemistry
Primary antibody type:
Mouse Monoclonal
Secondary antibody type:
Polymer-HRP-Goat anti-Mouse

Kit Component

Component	Size	Concentration
Antigen Retrieval Buffer	100 mL	50×
Washing Buffer	100 mL × 2	20×
Blocking Buffer	5 mL	RTU
Primary Antibody	5 mL	RTU
Secondary Antibody	5 mL	RTU
Chromogen Component A	0.2 mL	RTU
Chromogen Component B	4 mL	RTU
Signal Enhancer	5 mL	RTU
Counter Staining Reagent	5 mL	RTU
Mounting Media	5 mL	RTU
Control Slide	1 slide (Optional)	FFPE
Datasheet	1 Copy	
Manual	1 Copy	

Storage Instructions

All the reagents are stored at 2-8°C. The kit is stable for 6 months from the date of receipt.

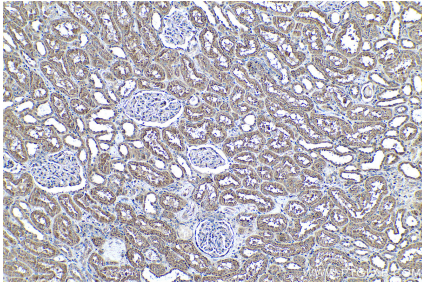
Background

Phosphatidylethanolamine binding protein PEBP1, also termed Raf kinase inhibitor protein (RKIP), was initially identified as a potent inhibitor of Raf-1/MEK/ERK, NF-κB, and G-protein-coupled receptor signaling pathways. Later RKIP has been further identified as a metastasis suppressor and its loss of expression has been reported in various cancers. Its expression has been proposed as a prognostic marker for patients diagnosed with the above cancers.

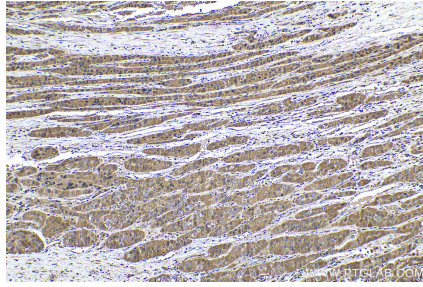
Synonyms

HCNP, HCNPPp, Neuropolypeptide h3, PBP, PEBP, PEBP 1, PEBP1, Prostatic binding protein, Raf kinase inhibitor protein, RKIP

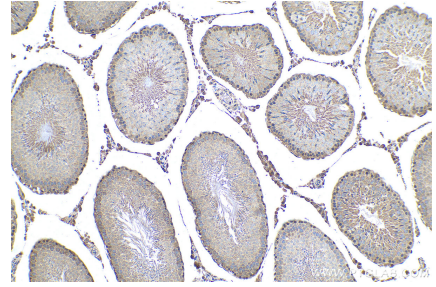
Selected Validation Data



Immunohistochemical analysis of paraffin-embedded human kidney tissue slide using KHC0500 (PEBP1 IHC Kit).



Immunohistochemical analysis of paraffin-embedded human liver cancer tissue slide using KHC0500 (PEBP1 IHC Kit).



Immunohistochemical analysis of paraffin-embedded rat testis tissue slide using KHC0500 (PEBP1 IHC Kit).