

IHC*easy* ADH1B Ready-To-Use IHC Kit

Catalog Number: **KHC0499**

General Information

Sample type:
FFPE tissue
Cited sample type:
Reactivity:
Human
Cited Reactivity:

Assay type:
Immunohistochemistry
Primary antibody type:
Mouse Monoclonal
Secondary antibody type:
Polymer-HRP-Goat anti-Mouse

Kit Component

Component	Size	Concentration
Antigen Retrieval Buffer	100 mL	50×
Washing Buffer	100 mL ×2	20×
Blocking Buffer	5 mL	RTU
Primary Antibody	5 mL	RTU
Secondary Antibody	5 mL	RTU
Chromogen Component A	0.2 mL	RTU
Chromogen Component B	4 mL	RTU
Signal Enhancer	5 mL	RTU
Counter Staining Reagent	5 mL	RTU
Mounting Media	5 mL	RTU
Control Slide	1 slide (Optional)	FFPE
Datasheet	1 Copy	
Manual	1 Copy	

Storage Instructions

All the reagents are stored at 2-8°C. The kit is stable for 6 months from the date of receipt.

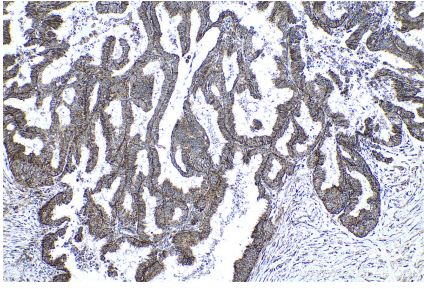
Background

The ADH1B gene encodes the beta subunit of class I alcohol dehydrogenase (ADH), an enzyme that catalyzes the rate-limiting step for ethanol metabolism: the oxidation of alcohol to acetaldehyde. Class 1 ADH is a homo- or heterodimeric molecule, formed by the association of 3 types of class I ADH subunits, alpha (ADH1A), beta, and gamma (ADH1C). ADH1B is also named as ADH2 and belongs to the zinc-containing alcohol dehydrogenase family. This protein can exist as a homodimer.

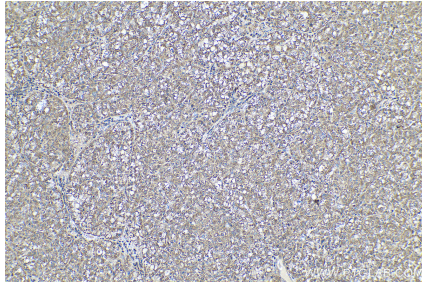
Synonyms

ADH1B, Alcohol dehydrogenase 1B, DKFZp686C06125

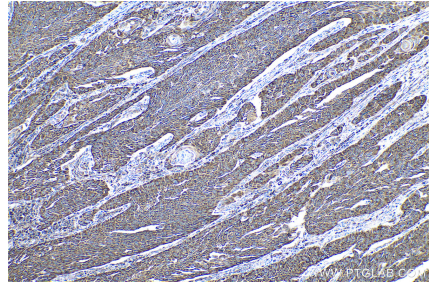
Selected Validation Data



Immunohistochemical analysis of paraffin-embedded human ovary tumor tissue slide using KHC0499 (ADH1B IHC Kit).



Immunohistochemical analysis of paraffin-embedded human liver cancer tissue slide using KHC0499 (ADH1B IHC Kit).



Immunohistochemical analysis of paraffin-embedded human oesophagus cancer tissue slide using KHC0499 (ADH1B IHC Kit).