

IHC*easy* RBM39 Ready-To-Use IHC Kit

Catalog Number: **KHC0497**

General Information

Sample type:
FFPE tissue
Cited sample type:
Reactivity:
Human, Mouse, Rat
Cited Reactivity:

Assay type:
Immunohistochemistry
Primary antibody type:
Mouse Monoclonal
Secondary antibody type:
Polymer-HRP-Goat anti-Mouse

Kit Component

Component	Size	Concentration
Antigen Retrieval Buffer	100 mL	50×
Washing Buffer	100 mL ×2	20×
Blocking Buffer	5 mL	RTU
Primary Antibody	5 mL	RTU
Secondary Antibody	5 mL	RTU
Chromogen Component A	0.2 mL	RTU
Chromogen Component B	4 mL	RTU
Signal Enhancer	5 mL	RTU
Counter Staining Reagent	5 mL	RTU
Mounting Media	5 mL	RTU
Control Slide	1 slide (Optional)	FFPE
Datasheet	1 Copy	
Manual	1 Copy	

Storage Instructions

All the reagents are stored at 2-8°C. The kit is stable for 6 months from the date of receipt.

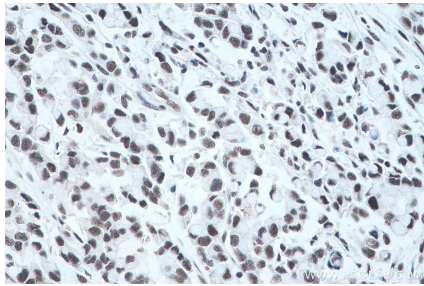
Background

RBM39, also named as HCC1 or RNPC2, is a 530 amino acid protein, which contains three RRM (RNA recognition motif) domains and belongs to the splicing factor SR family. RBM39 is widely expressed in various tissues and with highly expression in pancreas, skeletal muscle, lung and brain. RBM39 is a transcriptional coactivator for steroid nuclear receptors ESR1/ER-alpha and ESR2/ER-beta, and JUN/AP-1. RBM39 may be involved in pre-mRNA splicing process.

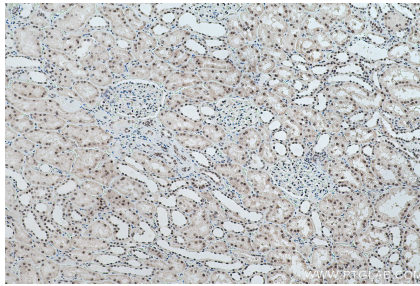
Synonyms

CAPER, CAPERalpha, CC1.3, DKFZp781C0423, FLJ44170, fSAP59, HCC1, RBM39, RNA binding motif protein 39, RNA binding protein 39, RNPC2, Splicing factor HCC1

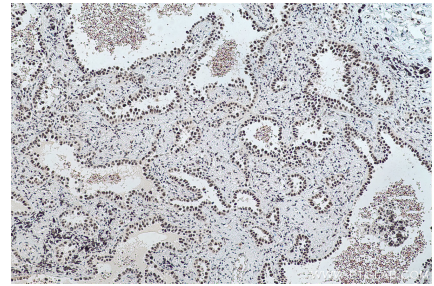
Selected Validation Data



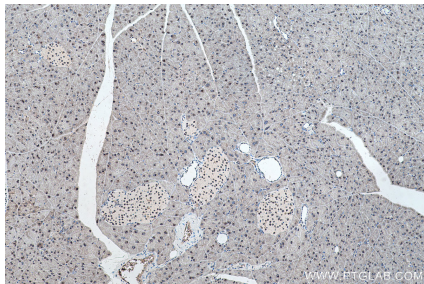
Immunohistochemical analysis of paraffin-embedded human colon cancer tissue slide using KHC0497 (RBM39 IHC Kit).



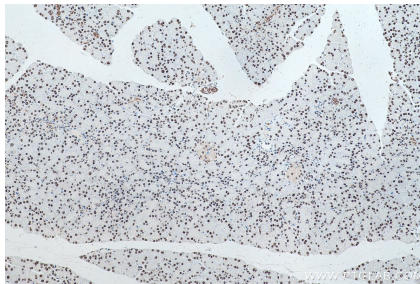
Immunohistochemical analysis of paraffin-embedded human kidney tissue slide using KHC0497 (RBM39 IHC Kit).



Immunohistochemical analysis of paraffin-embedded human lung cancer tissue slide using KHC0497 (RBM39 IHC Kit).



Immunohistochemical analysis of paraffin-embedded mouse pancreas tissue slide using KHC0497 (RBM39 IHC Kit).



Immunohistochemical analysis of paraffin-embedded rat pancreas tissue slide using KHC0497 (RBM39 IHC Kit).