

IHC*easy* CYP7B1 Ready-To-Use IHC Kit

Catalog Number: **KHC0486**

General Information

Sample type:
FFPE tissue
Cited sample type:
Reactivity:
Human
Cited Reactivity:

Assay type:
Immunohistochemistry
Primary antibody type:
Rabbit Polyclonal
Secondary antibody type:
Polymer-HRP-Goat anti-Rabbit

Kit Component

Component	Size	Concentration
Antigen Retrieval Buffer	100 mL	50×
Washing Buffer	100 mL ×2	20×
Blocking Buffer	5 mL	RTU
Primary Antibody	5 mL	RTU
Secondary Antibody	5 mL	RTU
Chromogen Component A	0.2 mL	RTU
Chromogen Component B	4 mL	RTU
Signal Enhancer	5 mL	RTU
Counter Staining Reagent	5 mL	RTU
Mounting Media	5 mL	RTU
Control Slide	1 slide (Optional)	FFPE
Datasheet	1 Copy	
Manual	1 Copy	

Storage Instructions

All the reagents are stored at 2-8°C. The kit is stable for 6 months from the date of receipt.

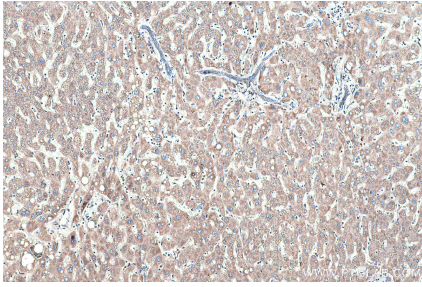
Background

CYP7B1(Cytochrome P450 7B1) is also named as 25-hydroxycholesterol 7-alpha-hydroxylase and belongs to the cytochrome P450 family. It catalyzes the first and rate-limiting step in the conversion of cholesterol to bile acids and CYP7B1-mediated catalysis may play a role for control of the cellular levels of androgens, not only of estrogens.

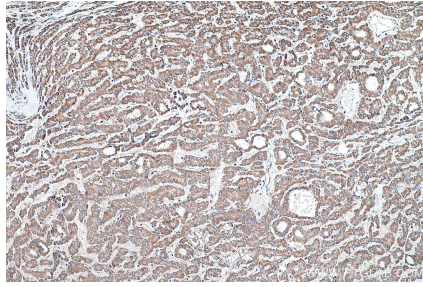
Synonyms

CBAS3, CP7B, CYP7B1, Cytochrome P450 7B1, Oxysterol 7 alpha hydroxylase, SPG5A

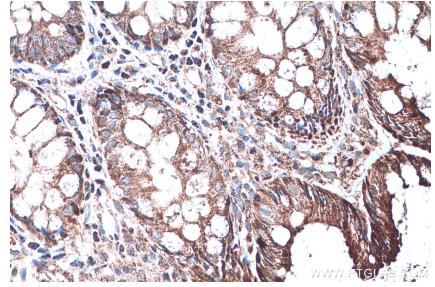
Selected Validation Data



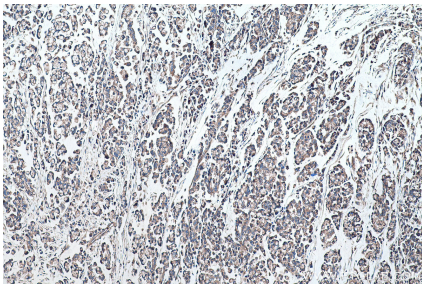
Immunohistochemical analysis of paraffin-embedded human liver tissue slide using KHC0486 (CYP7B1 IHC Kit).



Immunohistochemical analysis of paraffin-embedded human liver cancer tissue slide using KHC0486 (CYP7B1 IHC Kit).



Immunohistochemical analysis of paraffin-embedded human colon tissue slide using KHC0486 (CYP7B1 IHC Kit).



Immunohistochemical analysis of paraffin-embedded human colon cancer tissue slide using KHC0486 (CYP7B1 IHC Kit).