

IHC*easy* BGN/Biglycan Ready-To-Use IHC Kit

Catalog Number: **KHC0480**

General Information

Sample type:
FFPE tissue
Cited sample type:
Reactivity:
Human
Cited Reactivity:

Assay type:
Immunohistochemistry
Primary antibody type:
Mouse Monoclonal
Secondary antibody type:
Polymer-HRP-Goat anti-Mouse

Kit Component

Component	Size	Concentration
Antigen Retrieval Buffer	100 mL	50×
Washing Buffer	100 mL ×2	20×
Blocking Buffer	5 mL	RTU
Primary Antibody	5 mL	RTU
Secondary Antibody	5 mL	RTU
Chromogen Component A	0.2 mL	RTU
Chromogen Component B	4 mL	RTU
Signal Enhancer	5 mL	RTU
Counter Staining Reagent	5 mL	RTU
Mounting Media	5 mL	RTU
Control Slide	1 slide (Optional)	FFPE
Datasheet	1 Copy	
Manual	1 Copy	

Storage Instructions

All the reagents are stored at 2-8°C. The kit is stable for 6 months from the date of receipt.

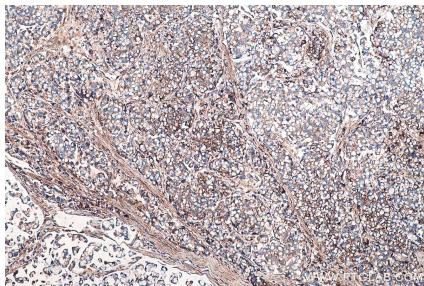
Background

Biglycan is a member of the small leucine-rich proteoglycan (SLRP) family. It consists of a core protein that containing leucine-rich repeats (LRRs), to which two chondroitin/dermatan sulfate side chains are covalently bound. The tissue-specific chondroitin- or dermatan-sulfate glycosaminoglycan chains of biglycan are attached to amino acid residues at the N-terminus of the core protein. Biglycan is a ubiquitous component of connective tissue matrix and may act as a signaling molecule. Upregulation of biglycan has been reported in multiple types of solid cancer.

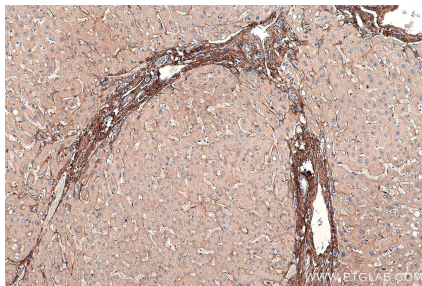
Synonyms

BGN, biglycan, Bone/cartilage proteoglycan I, DSPG1, PG S1, PGI, SLRR1A

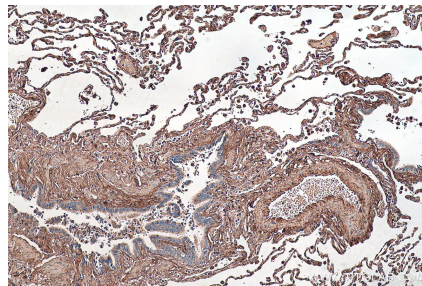
Selected Validation Data



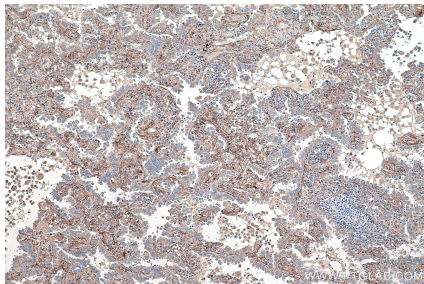
Immunohistochemical analysis of paraffin-embedded human colon cancer tissue slide using KHC0480 (BGN/Biglycan IHC Kit).



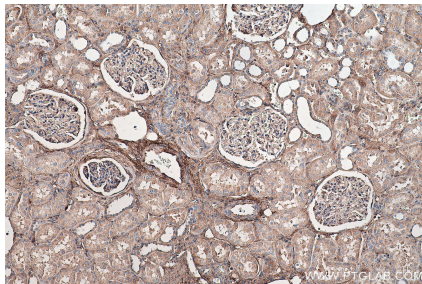
Immunohistochemical analysis of paraffin-embedded human liver tissue slide using KHC0480 (BGN/Biglycan IHC Kit).



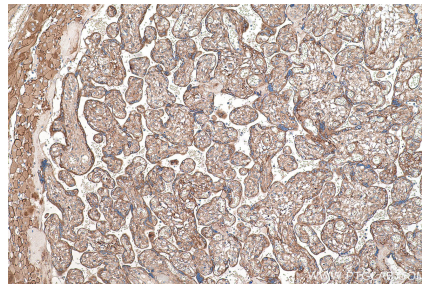
Immunohistochemical analysis of paraffin-embedded human lung tissue slide using KHC0480 (BGN/Biglycan IHC Kit).



Immunohistochemical analysis of paraffin-embedded human lung cancer tissue slide using KHC0480 (BGN/Biglycan IHC Kit).



Immunohistochemical analysis of paraffin-embedded human kidney tissue slide using KHC0480 (BGN/Biglycan IHC Kit).



Immunohistochemical analysis of paraffin-embedded human placenta tissue slide using KHC0480 (BGN/Biglycan IHC Kit).