

IHC*easy* SERPINC1 Ready-To-Use IHC Kit

Catalog Number: **KHC0460**

General Information

Sample type:
FFPE tissue
Cited sample type:
Reactivity:
Human, Rat
Cited Reactivity:

Assay type:
Immunohistochemistry
Primary antibody type:
Mouse Monoclonal
Secondary antibody type:
Polymer-HRP-Goat anti-Mouse

Kit Component

Component	Size	Concentration
Antigen Retrieval Buffer	100 mL	50×
Washing Buffer	100 mL ×2	20×
Blocking Buffer	5 mL	RTU
Primary Antibody	5 mL	RTU
Secondary Antibody	5 mL	RTU
Chromogen Component A	0.2 mL	RTU
Chromogen Component B	4 mL	RTU
Signal Enhancer	5 mL	RTU
Counter Staining Reagent	5 mL	RTU
Mounting Media	5 mL	RTU
Control Slide	1 slide (Optional)	FFPE
Datasheet	1 Copy	
Manual	1 Copy	

Storage Instructions

All the reagents are stored at 2-8°C. The kit is stable for 6 months from the date of receipt.

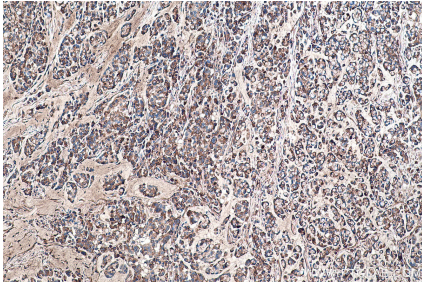
Background

SERPINC1, also named Antithrombin III or Antithrombin, is a plasma protease inhibitor and a member of the serpin superfamily. This protein inhibits thrombin as well as other activated serine proteases of the coagulation system, and it regulates the blood coagulation cascade. More than 120 mutations have been identified for this gene, many of which are known to cause antithrombin-III deficiency.

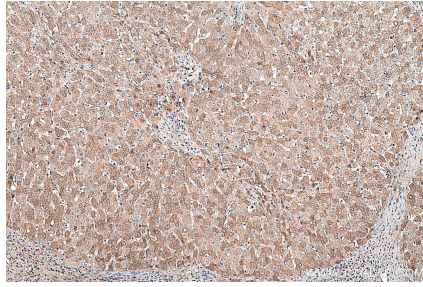
Synonyms

Antithrombin, Antithrombin III, AT3, ATIII, Serpin C1, SERPINC1

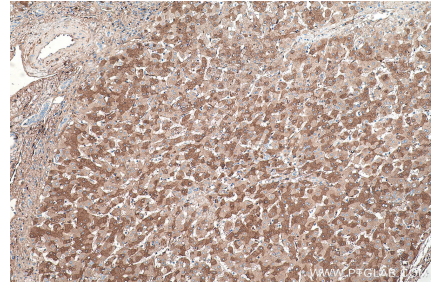
Selected Validation Data



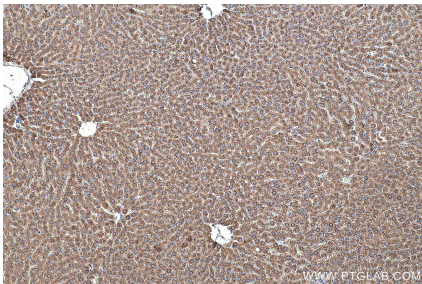
Immunohistochemical analysis of paraffin-embedded human colon cancer tissue slide using KHC0460 (SERPINC1 IHC Kit).



Immunohistochemical analysis of paraffin-embedded human liver tissue slide using KHC0460 (SERPINC1 IHC Kit).



Immunohistochemical analysis of paraffin-embedded human liver cancer tissue slide using KHC0460 (SERPINC1 IHC Kit).



Immunohistochemical analysis of paraffin-embedded rat liver tissue slide using KHC0460 (SERPINC1 IHC Kit).