

IHC*easy* PPIF Ready-To-Use IHC Kit

Catalog Number: **KHC0447**

General Information

Sample type:
FFPE tissue
Cited sample type:
Reactivity:
Human, Rat
Cited Reactivity:

Assay type:
Immunohistochemistry
Primary antibody type:
Rabbit Polyclonal
Secondary antibody type:
Polymer-HRP-Goat anti-Rabbit

Kit Component

Component	Size	Concentration
Antigen Retrieval Buffer	100 mL	50×
Washing Buffer	100 mL ×2	20×
Blocking Buffer	5 mL	RTU
Primary Antibody	5 mL	RTU
Secondary Antibody	5 mL	RTU
Chromogen Component A	0.2 mL	RTU
Chromogen Component B	4 mL	RTU
Signal Enhancer	5 mL	RTU
Counter Staining Reagent	5 mL	RTU
Mounting Media	5 mL	RTU
Control Slide	1 slide (Optional)	FFPE
Datasheet	1 Copy	
Manual	1 Copy	

Storage Instructions

All the reagents are stored at 2-8°C. The kit is stable for 6 months from the date of receipt.

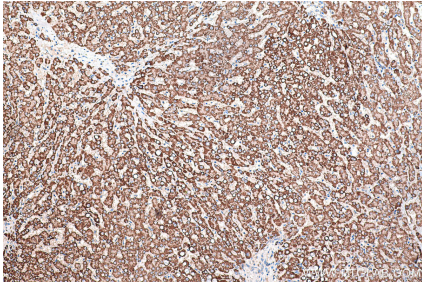
Background

PPIF, also named as CYP3, PPIase F and Rotamase F, belongs to the cyclophilin-type PPIase family. PPIases accelerate the folding of proteins. It catalyzes the cis-trans isomerization of proline imidic peptide bonds in oligopeptides. PPIF is a mitochondrial matrix protein involved in the induction of necrotic and apoptotic cell death through the activation of the mitochondrial permeability transition (mPT) pore. Primary antibody in this kit is immunized with full length gene PPIF and absorbed by PPIA. So this kit is specific to PPIF.

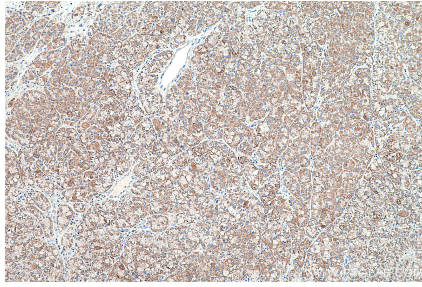
Synonyms

Cyclophilin F, Cyp D, CYP3, peptidylprolyl isomerase F, PPIase F, PPIF, PPIF-Specific, Rotamase F

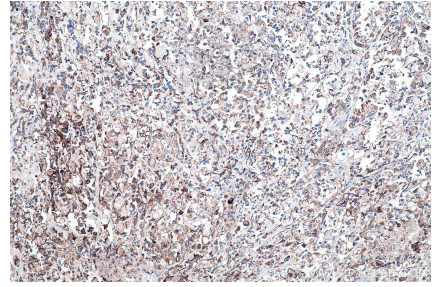
Selected Validation Data



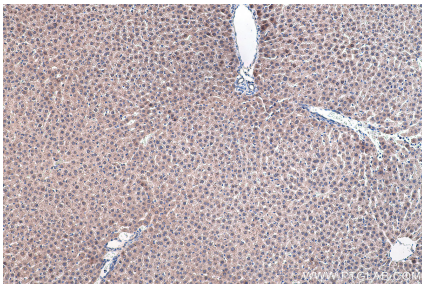
Immunohistochemical analysis of paraffin-embedded human liver tissue slide using KHC0447 (PPIF IHC Kit).



Immunohistochemical analysis of paraffin-embedded human liver cancer tissue slide using KHC0447 (PPIF IHC Kit).



Immunohistochemical analysis of paraffin-embedded human endometrial cancer tissue slide using KHC0447 (PPIF IHC Kit).



Immunohistochemical analysis of paraffin-embedded rat liver tissue slide using KHC0447 (PPIF IHC Kit).