

IHC*easy* PALMD Ready-To-Use IHC Kit

Catalog Number: **KHC0443**

General Information

Sample type:
FFPE tissue
Cited sample type:
Reactivity:
Human, Mouse, Rat
Cited Reactivity:

Assay type:
Immunohistochemistry
Primary antibody type:
Rabbit Polyclonal
Secondary antibody type:
Polymer-HRP-Goat anti-Rabbit

Kit Component

Component	Size	Concentration
Antigen Retrieval Buffer	100 mL	50×
Washing Buffer	100 mL ×2	20×
Blocking Buffer	5 mL	RTU
Primary Antibody	5 mL	RTU
Secondary Antibody	5 mL	RTU
Chromogen Component A	0.2 mL	RTU
Chromogen Component B	4 mL	RTU
Signal Enhancer	5 mL	RTU
Counter Staining Reagent	5 mL	RTU
Mounting Media	5 mL	RTU
Control Slide	1 slide (Optional)	FFPE
Datasheet	1 Copy	
Manual	1 Copy	

Storage Instructions

All the reagents are stored at 2-8°C. The kit is stable for 6 months from the date of receipt.

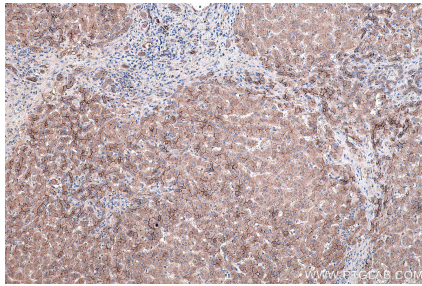
Background

Palmdelphin, encoded by PALMD gene, is a newly identified cytosolic isoform of paralemmin-1, a lipid raft-associated protein implicated in cell shape control. Paralemmin (Palm) is a prenyl-palmitoyl anchored membrane protein that can drive membrane and process formation in neurons. Previous finding suggest that palmdelphin may peripherally associate with endomembranes or cytoskeleton-linked structures.

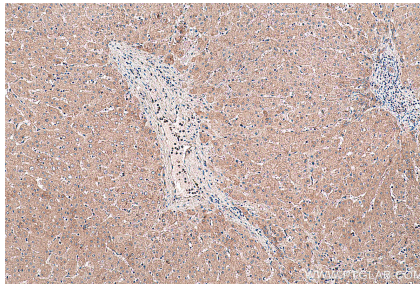
Synonyms

C1orf11, PALMD, palmdelphin, PALML, Paralemnin like protein

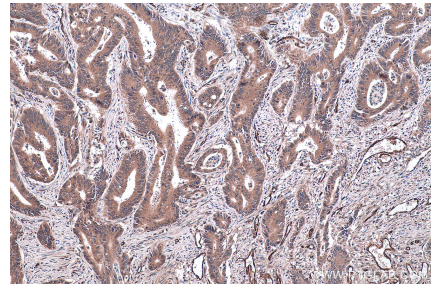
Selected Validation Data



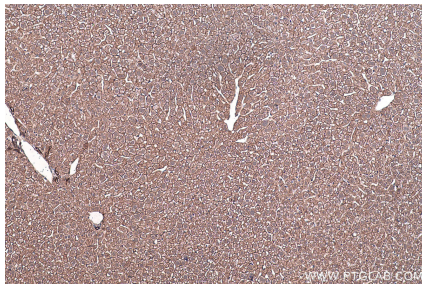
Immunohistochemical analysis of paraffin-embedded human liver cancer tissue slide using KHC0443 (PALMD IHC Kit).



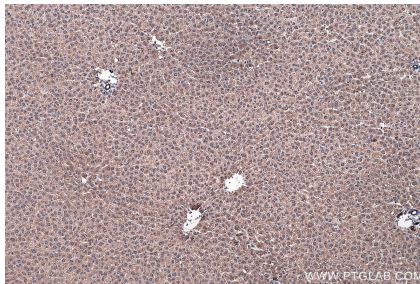
Immunohistochemical analysis of paraffin-embedded human liver tissue slide using KHC0443 (PALMD IHC Kit).



Immunohistochemical analysis of paraffin-embedded human colon cancer tissue slide using KHC0443 (PALMD IHC Kit).



Immunohistochemical analysis of paraffin-embedded mouse liver tissue slide using KHC0443 (PALMD IHC Kit).



Immunohistochemical analysis of paraffin-embedded rat liver tissue slide using KHC0443 (PALMD IHC Kit).