

# IHC*easy* NDUFAF2 Ready-To-Use IHC Kit

Catalog Number: **KHC0439**

## General Information

Sample type:  
FFPE tissue  
Cited sample type:  
Reactivity:  
Human, Mouse  
Cited Reactivity:

Assay type:  
Immunohistochemistry  
Primary antibody type:  
Rabbit Polyclonal  
Secondary antibody type:  
Polymer-HRP-Goat anti-Rabbit

## Kit Component

Component	Size	Concentration
Antigen Retrieval Buffer	100 mL	50×
Washing Buffer	100 mL ×2	20×
Blocking Buffer	5 mL	RTU
Primary Antibody	5 mL	RTU
Secondary Antibody	5 mL	RTU
Chromogen Component A	0.2 mL	RTU
Chromogen Component B	4 mL	RTU
Signal Enhancer	5 mL	RTU
Counter Staining Reagent	5 mL	RTU
Mounting Media	5 mL	RTU
Control Slide	1 slide (Optional)	FFPE
Datasheet	1 Copy	
Manual	1 Copy	

## Storage Instructions

All the reagents are stored at 2-8°C. The kit is stable for 6 months from the date of receipt.

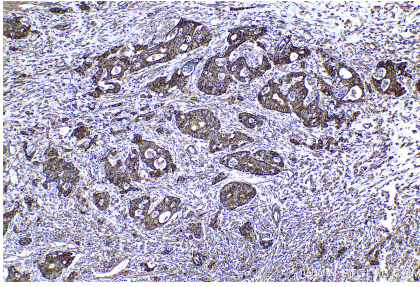
## Background

Mimitin, also named as MMTN, B17.2L, NDUFAF2 and NDUFA12L, is a small mitochondrial protein upregulated by proinflammatory cytokines at the transcriptional and protein levels. It is reported as a possible chaperone for assembly of mitochondrial complex I.

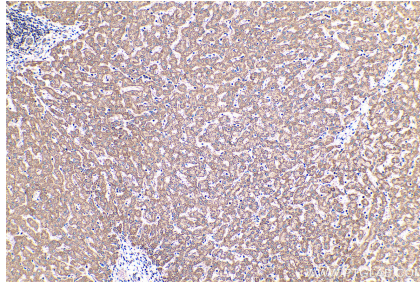
## Synonyms

B17.2 like, B17.2L, mimitin, Mimitin, mitochondrial, MMTN, NDUFA12 like protein, NDUFA12L, NDUFAF2

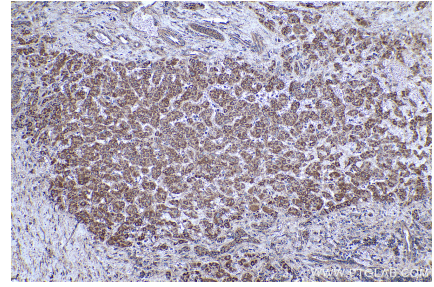
## Selected Validation Data



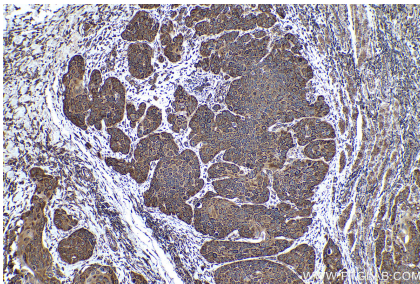
Immunohistochemical analysis of paraffin-embedded human colon cancer tissue slide using KHC0439 (NDUFAF2 IHC Kit).



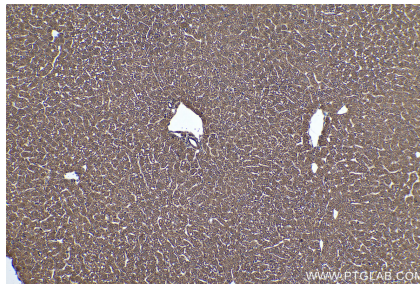
Immunohistochemical analysis of paraffin-embedded human liver tissue slide using KHC0439 (NDUFAF2 IHC Kit).



Immunohistochemical analysis of paraffin-embedded human liver cancer tissue slide using KHC0439 (NDUFAF2 IHC Kit).



Immunohistochemical analysis of paraffin-embedded human oesophagus cancer tissue slide using KHC0439 (NDUFAF2 IHC Kit).



Immunohistochemical analysis of paraffin-embedded mouse liver tissue slide using KHC0439 (NDUFAF2 IHC Kit).