

IHC*easy* MGLL Ready-To-Use IHC Kit

Catalog Number: **KHC0435**

General Information

Sample type:
FFPE tissue
Cited sample type:
Reactivity:
Human, Mouse
Cited Reactivity:

Assay type:
Immunohistochemistry
Primary antibody type:
Rabbit Polyclonal
Secondary antibody type:
Polymer-HRP-Goat anti-Rabbit

Kit Component

Component	Size	Concentration
Antigen Retrieval Buffer	100 mL	50×
Washing Buffer	100 mL ×2	20×
Blocking Buffer	5 mL	RTU
Primary Antibody	5 mL	RTU
Secondary Antibody	5 mL	RTU
Chromogen Component A	0.2 mL	RTU
Chromogen Component B	4 mL	RTU
Signal Enhancer	5 mL	RTU
Counter Staining Reagent	5 mL	RTU
Mounting Media	5 mL	RTU
Control Slide	1 slide (Optional)	FFPE
Datasheet	1 Copy	
Manual	1 Copy	

Storage Instructions

All the reagents are stored at 2-8°C. The kit is stable for 6 months from the date of receipt.

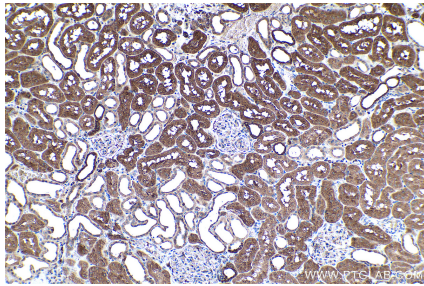
Background

MGLL (monoglyceride lipase) is also named as MAGL, HU-K5 and belongs to the monoacylglycerol lipase family. It converts monoacylglycerides to free fatty acids and glycerol and functions together with hormone-sensitive lipase (HSL) in the mobilization of fatty acids from the triglyceride stores of adipocytes. MGL protein is ubiquitously expressed in kidney, spleen, heart, liver, stomach, brain, lung, adrenal gland, adipose tissue and in brain.

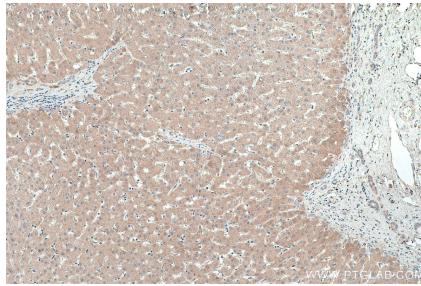
Synonyms

HU K5, HUK5, Lysophospholipase homolog, Lysophospholipase like, MGL, MGLL, Monoglyceride lipase

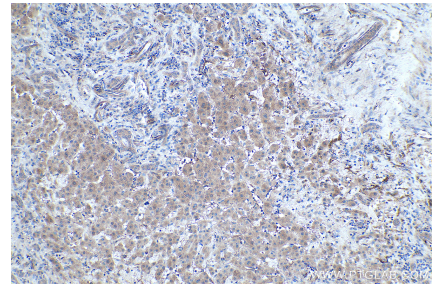
Selected Validation Data



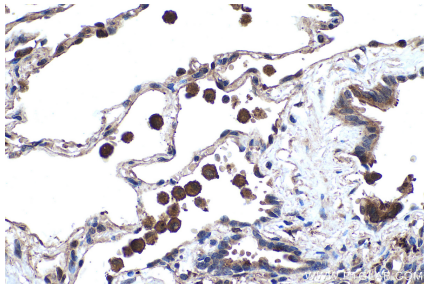
Immunohistochemical analysis of paraffin-embedded human kidney tissue slide using KHC0435 (MGLL IHC Kit).



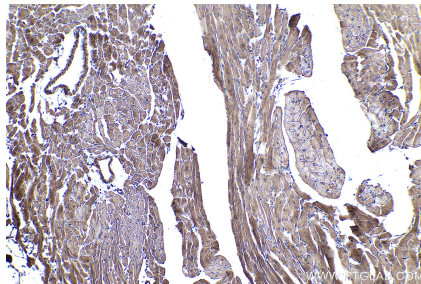
Immunohistochemical analysis of paraffin-embedded human liver tissue slide using KHC0435 (MGLL IHC Kit).



Immunohistochemical analysis of paraffin-embedded human liver cancer tissue slide using KHC0435 (MGLL IHC Kit).



Immunohistochemical analysis of paraffin-embedded human lung tissue slide using KHC0435 (MGLL IHC Kit).



Immunohistochemical analysis of paraffin-embedded mouse heart tissue slide using KHC0435 (MGLL IHC Kit).