

# IHC*easy* MBNL1 Ready-To-Use IHC Kit

Catalog Number: **KHC0433**

## General Information

**Sample type:**  
FFPE tissue

**Cited sample type:**

**Reactivity:**  
Human, Mouse, Rat

**Cited Reactivity:**

**Assay type:**  
Immunohistochemistry

**Primary antibody type:**  
Mouse Monoclonal

**Secondary antibody type:**  
Polymer-HRP-Goat anti-Mouse

## Kit Component

Component	Size	Concentration
Antigen Retrieval Buffer	100 mL	50×
Washing Buffer	100 mL ×2	20×
Blocking Buffer	5 mL	RTU
Primary Antibody	5 mL	RTU
Secondary Antibody	5 mL	RTU
Chromogen Component A	0.2 mL	RTU
Chromogen Component B	4 mL	RTU
Signal Enhancer	5 mL	RTU
Counter Staining Reagent	5 mL	RTU
Mounting Media	5 mL	RTU
Control Slide	1 slide (Optional)	FFPE
Datasheet	1 Copy	
Manual	1 Copy	

## Storage Instructions

All the reagents are stored at 2-8°C. The kit is stable for 6 months from the date of receipt.

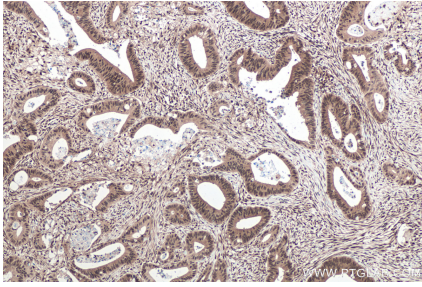
## Background

MBNL1 (muscleblind-like 1) is one of the MBNL proteins containing 3 members (MBNL1-3) in vertebrates. And MBNL1 is widely expressed in adult tissues including brain, heart and skeletal muscle. As a highly conserved RNA-binding protein, MBNL1 regulates alternative splicing, alternative polyadenylation, mRNA stability and mRNA localization in the nucleus. The neurological diseases DM1 and DM2 (myotonic dystrophy type 1 and type 2) are caused by expansion of repetitive sequences in non-coding regions in the DMPK gene because of the inappropriate patterns of alternative splicing owing to MBNL1.

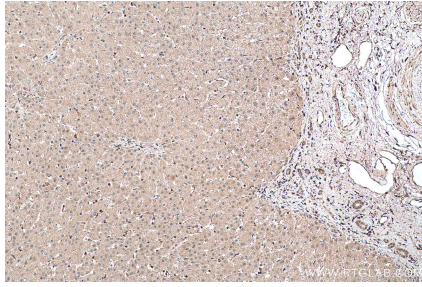
## Synonyms

DKFZp686P06174, EXP, EXP35, EXP40, EXP42, KIAA0428, MBNL, MBNL1, muscleblind like (Drosophila), Muscleblind like protein 1

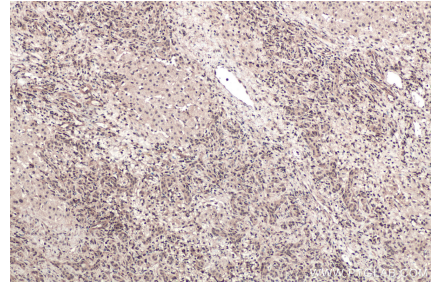
## Selected Validation Data



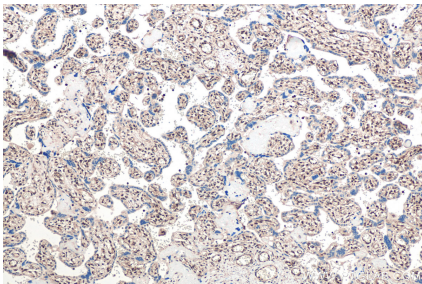
Immunohistochemical analysis of paraffin-embedded human colon cancer tissue slide using KHC0433 (MBNL1 IHC Kit).



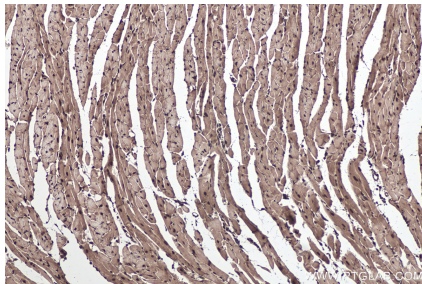
Immunohistochemical analysis of paraffin-embedded human liver tissue slide using KHC0433 (MBNL1 IHC Kit).



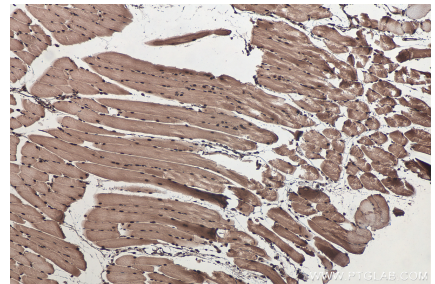
Immunohistochemical analysis of paraffin-embedded human liver cancer tissue slide using KHC0433 (MBNL1 IHC Kit).



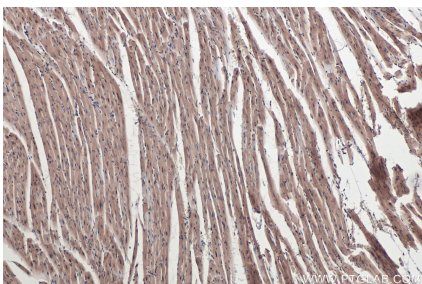
Immunohistochemical analysis of paraffin-embedded human placenta tissue slide using KHC0433 (MBNL1 IHC Kit).



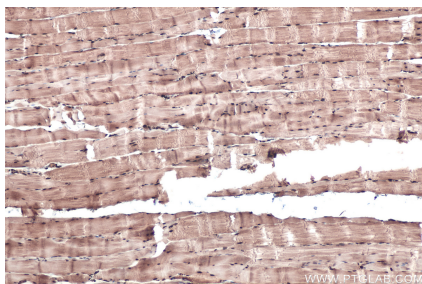
Immunohistochemical analysis of paraffin-embedded mouse heart tissue slide using KHC0433 (MBNL1 IHC Kit).



Immunohistochemical analysis of paraffin-embedded mouse skeletal muscle tissue slide using KHC0433 (MBNL1 IHC Kit).



Immunohistochemical analysis of paraffin-embedded rat heart tissue slide using KHC0433 (MBNL1 IHC Kit).



Immunohistochemical analysis of paraffin-embedded rat skeletal muscle tissue slide using KHC0433 (MBNL1 IHC Kit).