

IHC*easy* CPB2 Ready-To-Use IHC Kit

Catalog Number: **KHC0411**

General Information

Sample type:
FFPE tissue
Cited sample type:
Reactivity:
Human
Cited Reactivity:

Assay type:
Immunohistochemistry
Primary antibody type:
Rabbit Polyclonal
Secondary antibody type:
Polymer-HRP-Goat anti-Rabbit

Kit Component

Component	Size	Concentration
Antigen Retrieval Buffer	100 mL	50×
Washing Buffer	100 mL ×2	20×
Blocking Buffer	5 mL	RTU
Primary Antibody	5 mL	RTU
Secondary Antibody	5 mL	RTU
Chromogen Component A	0.2 mL	RTU
Chromogen Component B	4 mL	RTU
Signal Enhancer	5 mL	RTU
Counter Staining Reagent	5 mL	RTU
Mounting Media	5 mL	RTU
Control Slide	1 slide (Optional)	FFPE
Datasheet	1 Copy	
Manual	1 Copy	

Storage Instructions

All the reagents are stored at 2-8°C. The kit is stable for 6 months from the date of receipt.

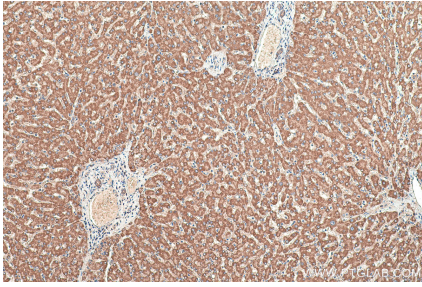
Background

CPB2(Carboxypeptidase B2) belongs to the peptidase M14 family. The CPB2 gene encoding TAFI is a candidate gene for blood pressure. Circulating CPB2 and platelets may potentially contribute to regulating the bioactivity of leukocyte chemoattractant chemerin (RARRES2), and further extend the molecular link between blood coagulation/fibrinolysis and CMKLR1-mediated immune responses. This protein has 2 isoforms produced by alternative splicing.

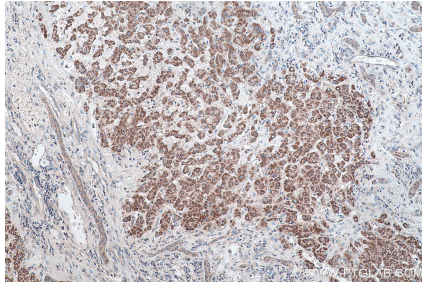
Synonyms

Carboxypeptidase B2, carboxypeptidase B2 (plasma), Carboxypeptidase U, CPB2, CPU, PCPB, Plasma carboxypeptidase B, TAFI

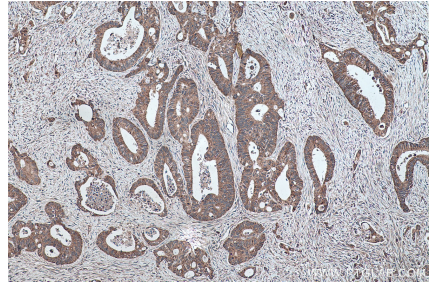
Selected Validation Data



Immunohistochemical analysis of paraffin-embedded human liver tissue slide using KHC0411 (CPB2 IHC Kit).



Immunohistochemical analysis of paraffin-embedded human liver cancer tissue slide using KHC0411 (Carboxypeptidase B2 IHC Kit).



Immunohistochemical analysis of paraffin-embedded human colon cancer tissue slide using KHC0411 (Carboxypeptidase B2 IHC Kit).