

IHC*easy* CFH Ready-To-Use IHC Kit

Catalog Number: **KHC0409**

General Information

Sample type:
FFPE tissue
Cited sample type:
Reactivity:
Human
Cited Reactivity:

Assay type:
Immunohistochemistry
Primary antibody type:
Rabbit Polyclonal
Secondary antibody type:
Polymer-HRP-Goat anti-Rabbit

Kit Component

| Component | Size | Concentration |
|--------------------------|--------------------|---------------|
| Antigen Retrieval Buffer | 100 mL | 50× |
| Washing Buffer | 100 mL ×2 | 20× |
| Blocking Buffer | 5 mL | RTU |
| Primary Antibody | 5 mL | RTU |
| Secondary Antibody | 5 mL | RTU |
| Chromogen Component A | 0.2 mL | RTU |
| Chromogen Component B | 4 mL | RTU |
| Signal Enhancer | 5 mL | RTU |
| Counter Staining Reagent | 5 mL | RTU |
| Mounting Media | 5 mL | RTU |
| Control Slide | 1 slide (Optional) | FFPE |
| Datasheet | 1 Copy | |
| Manual | 1 Copy | |

Storage Instructions

All the reagents are stored at 2-8°C. The kit is stable for 6 months from the date of receipt.

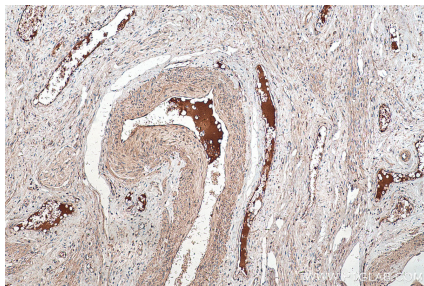
Background

Complement factor H (CFH) is an abundant plasma glycoprotein that regulates the function of the alternative complement pathway in fluid phase and on cellular surfaces. Factor H binds to C3b, accelerates the decay of the alternative pathway C3-convertase (C3bBb) and acts as a cofactor for the factor I-mediated proteolytic inactivation of C3b. It plays a critical role in the homeostasis of the complement system in plasma and in the protection of bystander host cells and tissues from damage by complement activation. Abnormalities in factor H have been associated with renal disease.

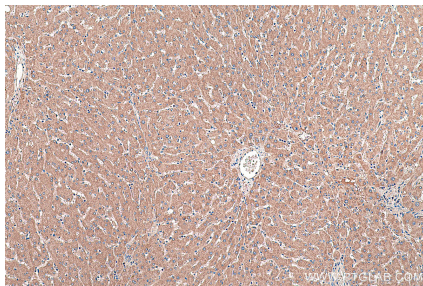
Synonyms

ARMD4, ARMS1, CFH, CFHL3, Complement factor H, Factor H, FH, FHL1, H factor 1, HF, HF1, HF2, HUS

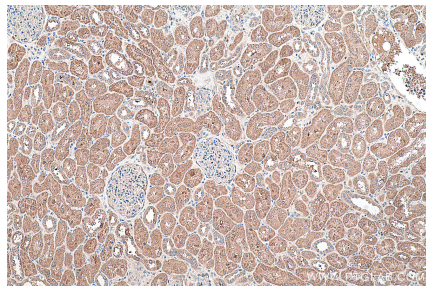
Selected Validation Data



Immunohistochemical analysis of paraffin-embedded human cervical cancer tissue slide using KHCO409 (CFH IHC Kit).



Immunohistochemical analysis of paraffin-embedded human liver tissue slide using KHCO409 (CFH IHC Kit).



Immunohistochemical analysis of paraffin-embedded human kidney tissue slide using KHCO409 (CFH IHC Kit).