

IHC*easy* CYP3A4 Ready-To-Use IHC Kit

Catalog Number: **KHC0387**

General Information

Sample type:
FFPE tissue
Cited sample type:
Reactivity:
Human
Cited Reactivity:

Assay type:
Immunohistochemistry
Primary antibody type:
Mouse Monoclonal
Secondary antibody type:
Polymer-HRP-Goat anti-Mouse

Kit Component

Component	Size	Concentration
Antigen Retrieval Buffer	100 mL	50×
Washing Buffer	100 mL ×2	20×
Blocking Buffer	5 mL	RTU
Primary Antibody	5 mL	RTU
Secondary Antibody	5 mL	RTU
Chromogen Component A	0.2 mL	RTU
Chromogen Component B	4 mL	RTU
Signal Enhancer	5 mL	RTU
Counter Staining Reagent	5 mL	RTU
Mounting Media	5 mL	RTU
Control Slide	1 slide (Optional)	FFPE
Datasheet	1 Copy	
Manual	1 Copy	

Storage Instructions

All the reagents are stored at 2-8°C. The kit is stable for 6 months from the date of receipt.

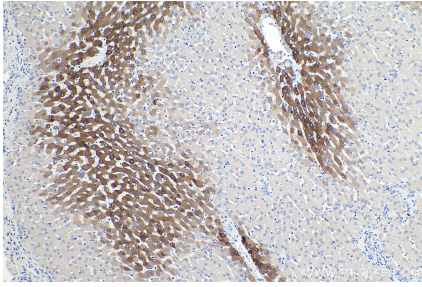
Background

Cytochrome P450 3A(CYP3A) belongs to the cytochrome P450 family and the enzymes constitute an important detoxification system that contributes to primary metabolism of more than half of all prescribed medications. CYP3A expression determines impairment of drug absorption and efficient systemic clearance in a tissue-specific manner. The murine homolog of human CYP3A4 is CYP3A11. The highest amounts of drug-metabolizing cytochromes P-450 are found in the liver and intestine, with lower amounts found in other organs, including the kidney, lung, and brain. LPS that has reached the circulation stimulates a TLR4-dependent mechanism in the periphery, evoking a reduction in Cyp3a11 expression and metabolism in the liver.

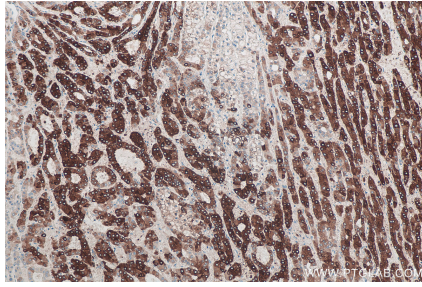
Synonyms

Albendazole monooxygenase, Albendazole sulfoxidase, CP33, CP34, CYP3A, CYP3A3, CYP3A4, CYP3A3, CYP3A4, Cytochrome P450 3A3, Cytochrome P450 3A4, Cytochrome P450 HLP, Cytochrome P450 NF 25, Cytochrome P450 PCN1, HLP, NF 25, Nifedipine oxidase, P450C3, P450PCN1, Quinine 3 monooxygenase

Selected Validation Data



Immunohistochemical analysis of paraffin-embedded human liver tissue slide using KHC0387 (CYP3A4 IHC Kit).



Immunohistochemical analysis of paraffin-embedded human liver cancer tissue slide using KHC0387 (CYP3A4 IHC Kit).