

# IHCeasy<sup>®</sup> SERPINA1/AAT Ready-To-Use IHC Kit

Catalog Number: KHC0379

## General Information

Sample type:  
FFPE tissue  
Cited sample type:  
Reactivity:  
Human  
Cited Reactivity:

Assay type:  
Immunohistochemistry  
Primary antibody type:  
Mouse Monoclonal  
Secondary antibody type:  
Polymer-HRP-Goat anti-Mouse

## Kit Component

Component	Size	Concentration
Antigen Retrieval Buffer	100 mL	50×
Washing Buffer	100 mL ×2	20×
Blocking Buffer	5 mL	RTU
Primary Antibody	5 mL	RTU
Secondary Antibody	5 mL	RTU
Chromogen Component A	0.2 mL	RTU
Chromogen Component B	4 mL	RTU
Signal Enhancer	5 mL	RTU
Counter Staining Reagent	5 mL	RTU
Mounting Media	5 mL	RTU
Control Slide	1 slide (Optional)	FFPE
Datasheet	1 Copy	
Manual	1 Copy	

## Storage Instructions

All the reagents are stored at 2-8°C. The kit is stable for 6 months from the date of receipt.

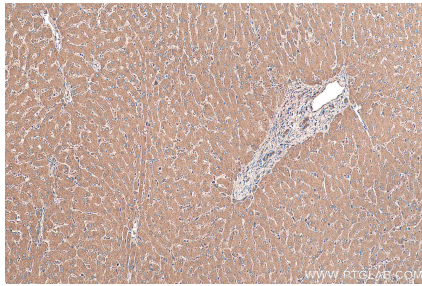
## Background

SERPINA1 is the gene for a protein called alpha-1-antitrypsin (AAT), which is a serine protease inhibitor whose targets include elastase, plasmin, thrombin, trypsin, chymotrypsin, and plasminogen activator. AAT is a glycoprotein synthesized primarily by hepatocytes, with smaller amounts synthesized by intestinal epithelial cells, neutrophils, pulmonary alveolar cells and macrophages. AAT is the most abundant, endogenous serine protease inhibitor in blood circulation and it has been implicated in regulating vital fluid phase biological events such as blood coagulation, fibrinolysis, complement activation, apoptosis, reproduction, tumor progression and inflammatory response. The primary function of AAT is thought to be the inactivation of neutrophil elastase and other endogenous serine proteases. Defects in SERPINA1 can cause emphysema or liver disease.

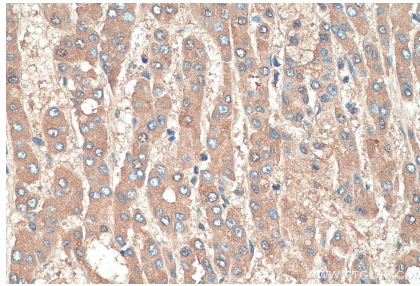
## Synonyms

A1A, A-1-Antitrypsin, A1AT, AAT, Alpha 1 antiprotease, Alpha 1 antitrypsin, Alpha 1 protease inhibitor, PI, PI1, PRO2209, PRO2275, Serpin A1, SERPINA1, SPAAT,  $\alpha$  1-antitrypsin

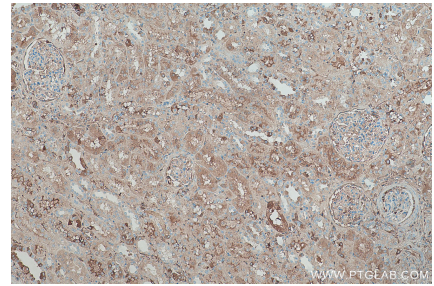
## Selected Validation Data



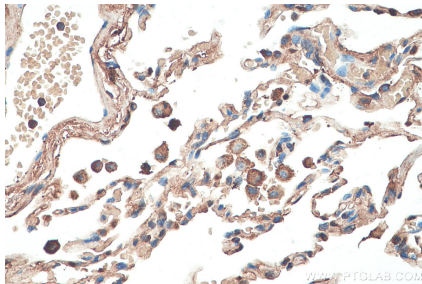
Immunohistochemical analysis of paraffin-embedded human liver tissue slide using KHC0379 (SERPINA1/AAT IHC Kit).



Immunohistochemical analysis of paraffin-embedded human liver cancer tissue slide using KHC0379 (SERPINA1/AAT IHC Kit).



Immunohistochemical analysis of paraffin-embedded human kidney tissue slide using KHC0379 (SERPINA1/AAT IHC Kit).



Immunohistochemical analysis of paraffin-embedded human lung tissue slide using KHC0379 (SERPINA1/AAT IHC Kit).