

IHC*easy* CKB/CKM Ready-To-Use IHC Kit

Catalog Number: **KHC0326**

General Information

Sample type:
FFPE tissue
Cited sample type:
Reactivity:
Human, Mouse, Rat
Cited Reactivity:

Assay type:
Immunohistochemistry
Primary antibody type:
Rabbit Polyclonal
Secondary antibody type:
Polymer-HRP-Goat anti-Rabbit

Kit Component

Component	Size	Concentration
Antigen Retrieval Buffer	100 mL	50×
Washing Buffer	100 mL ×2	20×
Blocking Buffer	5 mL	RTU
Primary Antibody	5 mL	RTU
Secondary Antibody	5 mL	RTU
Chromogen Component A	0.2 mL	RTU
Chromogen Component B	4 mL	RTU
Signal Enhancer	5 mL	RTU
Counter Staining Reagent	5 mL	RTU
Mounting Media	5 mL	RTU
Control Slide	1 slide (Optional)	FFPE
Datasheet	1 Copy	
Manual	1 Copy	

Storage Instructions

All the reagents are stored at 2-8°C. The kit is stable for 6 months from the date of receipt.

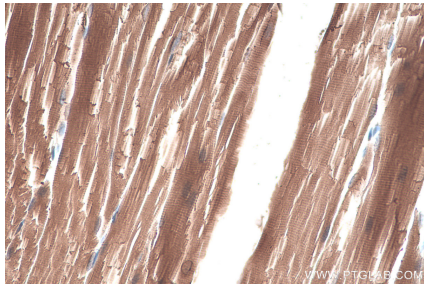
Background

CKB, also named as B-CK, is a member of the ATP:guanido phosphotransferase protein family. It is a cytoplasmic enzyme involved in energy homeostasis. CKB reversibly catalyzes the transfer of phosphate between ATP and various phosphogens such as creatine phosphate. It acts as a homodimer in brain as well as in other tissues, and as a heterodimer with a similar muscle isozyme in heart. CK isoenzymes play a central role in energy transduction in tissues with large, fluctuating energy demands, such as skeletal muscle, heart, brain and spermatozoa. It consists of a dimer of identical or non-identical chains, which can be either B (brain type) or M (muscle type). With MM being the major form in skeletal muscle and myocardium, MB existing in myocardium, and BB existing in many tissues, especially brain. Primary antibody in this kit can recognize both CKB and CKM due to the high homology.

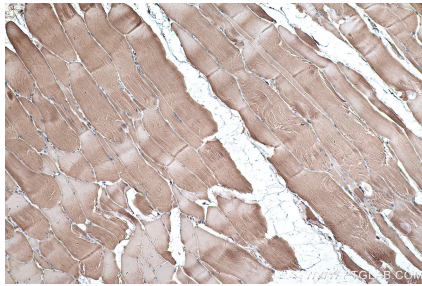
Synonyms

B CK, CKB, CKB/CKM, CKBB, Creatine kinase B chain, Creatine kinase B type, creatine kinase, brain

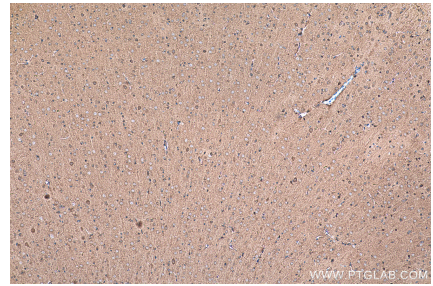
Selected Validation Data



Immunohistochemical analysis of paraffin-embedded mouse skeletal muscle tissue slide using KHC0326 (CKB/CKM IHC Kit).



Immunohistochemical analysis of paraffin-embedded rat skeletal muscle tissue slide using KHC0326 (CKB/CKM IHC Kit).



Immunohistochemical analysis of paraffin-embedded rat brain tissue slide using KHC0326 (CKB/CKM IHC Kit).