

IHC*easy* GOT2 Ready-To-Use IHC Kit

Catalog Number: **KHC0320**

General Information

Sample type:
FFPE tissue
Cited sample type:
Reactivity:
Human, Mouse, Rat
Cited Reactivity:

Assay type:
Immunohistochemistry
Primary antibody type:
Rabbit Polyclonal
Secondary antibody type:
Polymer-HRP-Goat anti-Rabbit

Kit Component

Component	Size	Concentration
Antigen Retrieval Buffer	100 mL	50×
Washing Buffer	100 mL ×2	20×
Blocking Buffer	5 mL	RTU
Primary Antibody	5 mL	RTU
Secondary Antibody	5 mL	RTU
Chromogen Component A	0.2 mL	RTU
Chromogen Component B	4 mL	RTU
Signal Enhancer	5 mL	RTU
Counter Staining Reagent	5 mL	RTU
Mounting Media	5 mL	RTU
Control Slide	1 slide (Optional)	FFPE
Datasheet	1 Copy	
Manual	1 Copy	

Storage Instructions

All the reagents are stored at 2-8°C. The kit is stable for 6 months from the date of receipt.

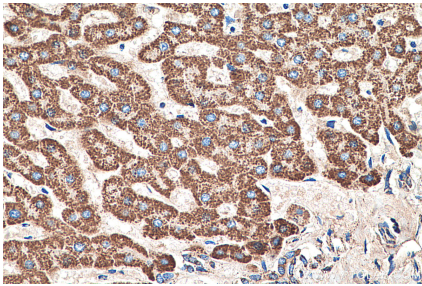
Background

GOT2 encodes the mitochondrial glutamate oxaloacetate transaminase and plays an essential role in the intracellular NAD(H) redox balance. Upregulation of GOT2 has been reported in various cancers, including breast cancer and pancreatic cancer. GOT2 mutation leads to autosomal recessive neurometabolic disorder.

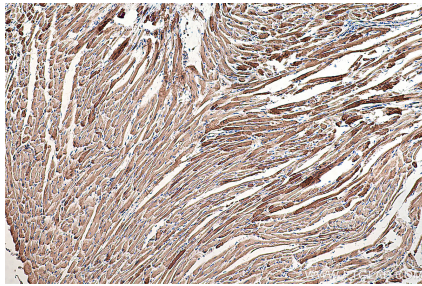
Synonyms

FABPpm, GOT2, KAT4, KATIV, mAspAT, mitAAT, Transaminase A

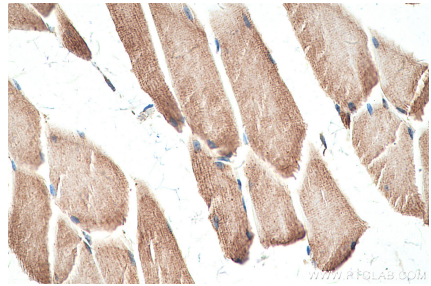
Selected Validation Data



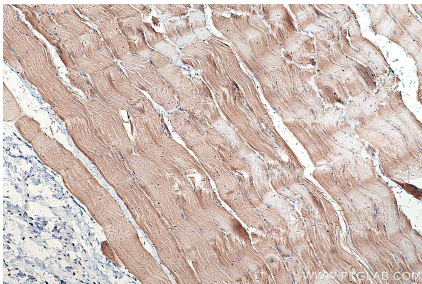
Immunohistochemical analysis of paraffin-embedded human liver tissue slide using KHC0320 (GOT2 IHC Kit).



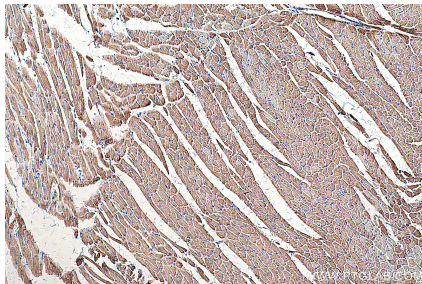
Immunohistochemical analysis of paraffin-embedded mouse heart tissue slide using KHC0320 (GOT2 IHC Kit).



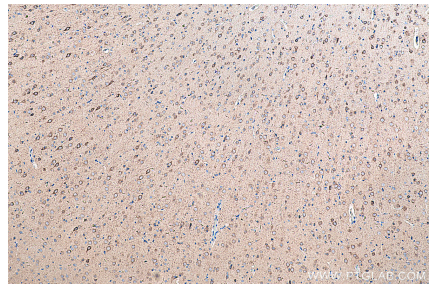
Immunohistochemical analysis of paraffin-embedded mouse skeletal muscle tissue slide using KHC0320 (GOT2 IHC Kit).



Immunohistochemical analysis of paraffin-embedded rat skeletal muscle tissue slide using KHC0320 (GOT2 IHC Kit).



Immunohistochemical analysis of paraffin-embedded rat heart tissue slide using KHC0320 (GOT2 IHC Kit).



Immunohistochemical analysis of paraffin-embedded rat brain tissue slide using KHC0320 (GOT2 IHC Kit).