

# IHC*easy* STMN2 Ready-To-Use IHC Kit

Catalog Number: **KHC0300**

## General Information

**Sample type:**  
FFPE tissue

**Cited sample type:**

**Reactivity:**  
Human, Mouse, Rat

**Cited Reactivity:**

**Assay type:**  
Immunohistochemistry

**Primary antibody type:**  
Mouse Monoclonal

**Secondary antibody type:**  
Polymer-HRP-Goat anti-Mouse

## Kit Component

Component	Size	Concentration
Antigen Retrieval Buffer	100 mL	50×
Washing Buffer	100 mL ×2	20×
Blocking Buffer	5 mL	RTU
Primary Antibody	5 mL	RTU
Secondary Antibody	5 mL	RTU
Chromogen Component A	0.2 mL	RTU
Chromogen Component B	4 mL	RTU
Signal Enhancer	5 mL	RTU
Counter Staining Reagent	5 mL	RTU
Mounting Media	5 mL	RTU
Control Slide	1 slide (Optional)	FFPE
Datasheet	1 Copy	
Manual	1 Copy	

## Storage Instructions

All the reagents are stored at 2-8°C. The kit is stable for 6 months from the date of receipt.

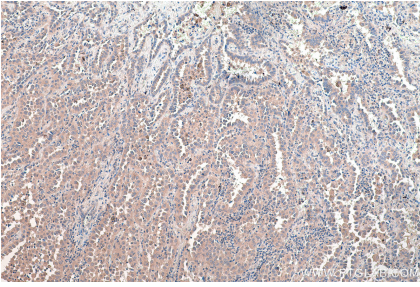
## Background

Stathmin-2 (encoded by STMN2), a member of the stathmin family of proteins, encodes a phosphoprotein that has an important role in microtubule dynamics. The STMN2 protein promotes microtubule dynamics in axonal growth cones, and is thought to play an important role in neurite outgrowth. STMN2 protein is localized in both Golgi and cytosolic compartments. Its expression appears modulated in osteoblasts by nerve growth factor, dexamethasone or RhoA kinase inhibitor Y-27632 which are known effectors of osteogenesis.

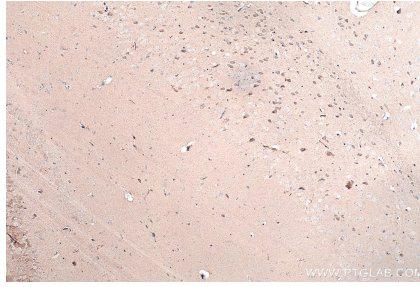
## Synonyms

Protein SCG10, SCG10, SCGN10, SGC10, Stathmin 2, stathmin like 2, STMN2

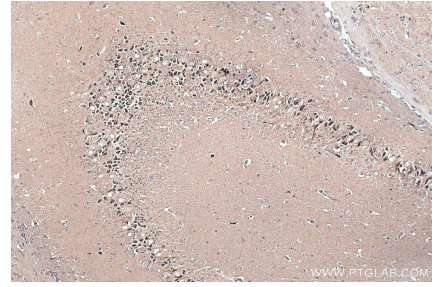
## Selected Validation Data



Immunohistochemical analysis of paraffin-embedded human lung cancer tissue slide using KHC0300 (STMN2 IHC Kit).



Immunohistochemical analysis of paraffin-embedded mouse brain tissue slide using KHC0300 (STMN2 IHC Kit).



Immunohistochemical analysis of paraffin-embedded rat brain tissue slide using KHC0300 (STMN2 IHC Kit).