

IHCeasy[®] GAST Ready-To-Use IHC Kit

Catalog Number: **KHC0282**

General Information

Sample type:
FFPE tissue
Cited sample type:
Reactivity:
Human, Mouse
Cited Reactivity:

Assay type:
Immunohistochemistry
Primary antibody type:
Mouse Monoclonal
Secondary antibody type:
Polymer-HRP-Goat anti-Mouse

Kit Component

Component	Size	Concentration
Antigen Retrieval Buffer	100 mL	50×
Washing Buffer	100 mL ×2	20×
Blocking Buffer	5 mL	RTU
Primary Antibody	5 mL	RTU
Secondary Antibody	5 mL	RTU
Chromogen Component A	0.2 mL	RTU
Chromogen Component B	4 mL	RTU
Signal Enhancer	5 mL	RTU
Counter Staining Reagent	5 mL	RTU
Mounting Media	5 mL	RTU
Control Slide	1 slide (Optional)	FFPE
Datasheet	1 Copy	
Manual	1 Copy	

Storage Instructions

All the reagents are stored at 2-8°C. The kit is stable for 6 months from the date of receipt.

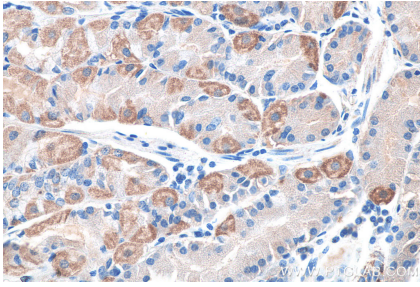
Background

Gastrin is a hormone produced primarily by G-cells in the stomach, where it functions to stimulate acid secretion by gastric parietal cells. Gastrin is a promiscuous hormone. Thus, the gastrin gene is expressed in common cancers such as bronchogenic, colorectal, ovarian and pancreatic carcinomas.

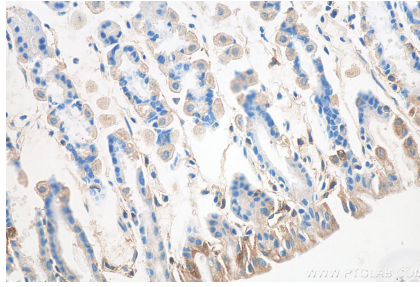
Synonyms

G14 Gastrin 6, G17 Gastrin 14, G34 Gastrin, G52 Big gastrin, G6, GAS, GAST, gastrin, Gastrin 17, Gastrin 34, Gastrin component I Gastrin 52, Gastrin component II, Gastrin component III

Selected Validation Data



Immunohistochemical analysis of paraffin-embedded human stomach tissue slide using KHC0282 (GAST IHC Kit).



Immunohistochemical analysis of paraffin-embedded mouse stomach tissue slide using KHC0282 (GAST IHC Kit).