

# IHC*easy* LPL Ready-To-Use IHC Kit

Catalog Number: **KHC0233**

## General Information

**Sample type:**  
FFPE tissue

**Cited sample type:**

**Reactivity:**  
Human, Mouse, Rat

**Cited Reactivity:**

**Assay type:**  
Immunohistochemistry

**Primary antibody type:**  
Rabbit Polyclonal

**Secondary antibody type:**  
Polymer-HRP-Goat anti-Rabbit

## Kit Component

Component	Size	Concentration
Antigen Retrieval Buffer	100 mL	50×
Washing Buffer	100 mL ×2	20×
Blocking Buffer	5 mL	RTU
Primary Antibody	5 mL	RTU
Secondary Antibody	5 mL	RTU
Chromogen Component A	0.2 mL	RTU
Chromogen Component B	4 mL	RTU
Signal Enhancer	5 mL	RTU
Counter Staining Reagent	5 mL	RTU
Mounting Media	5 mL	RTU
Control Slide	1 slide (Optional)	FFPE
Datasheet	1 Copy	
Manual	1 Copy	

## Storage Instructions

All the reagents are stored at 2-8°C. The kit is stable for 6 months from the date of receipt.

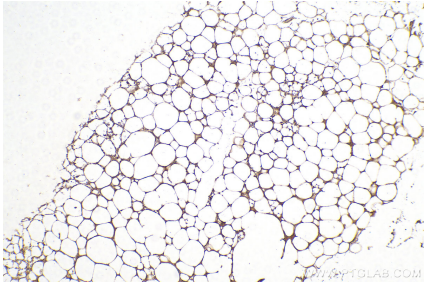
## Background

LPL (lipoprotein lipase) is also named as LIPD and belongs to the AB hydrolase superfamily. LPL catalyses the hydrolysis of the triacylglycerol component of circulating chylomicrons and very low density lipoproteins. It plays a role in the binding of lipoprotein particles to cell-surface molecules, including sulfated glycosaminoglycans (GAGs). The gene encodes a protein of 475 amino acids that becomes a mature protein of 448 residues after cleavage of a signal peptide. This protein is highly glycosylated and functions as a head-to-tail dimer under well-defined conditions.

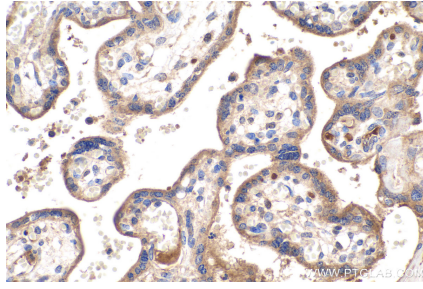
## Synonyms

HDLCQ11, LIPD, lipoprotein lipase, LPL

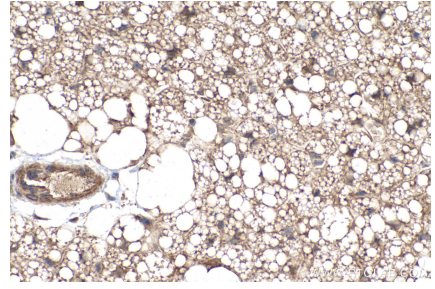
## Selected Validation Data



Immunohistochemical analysis of paraffin-embedded mouse brown adipose tissue slide using KHC0233 (LPL IHC Kit).



Immunohistochemical analysis of paraffin-embedded human placenta tissue slide using KHC0233 (LPL IHC Kit).



Immunohistochemical analysis of paraffin-embedded mouse brown adipose tissue slide using KHC0233 (LPL IHC Kit).