

IHC*easy* CDH16 Ready-To-Use IHC Kit

Catalog Number: **KHC0214**

General Information

Sample type:
FFPE tissue
Cited sample type:
Reactivity:
Human, Mouse
Cited Reactivity:

Assay type:
Immunohistochemistry
Primary antibody type:
Rabbit Polyclonal
Secondary antibody type:
Polymer-HRP-Goat anti-Rabbit

Kit Component

Component	Size	Concentration
Antigen Retrieval Buffer	100 mL	50×
Washing Buffer	100 mL ×2	20×
Blocking Buffer	5 mL	RTU
Primary Antibody	5 mL	RTU
Secondary Antibody	5 mL	RTU
Chromogen Component A	0.2 mL	RTU
Chromogen Component B	4 mL	RTU
Signal Enhancer	5 mL	RTU
Counter Staining Reagent	5 mL	RTU
Mounting Media	5 mL	RTU
Control Slide	1 slide (Optional)	FFPE
Datasheet	1 Copy	
Manual	1 Copy	

Storage Instructions

All the reagents are stored at 2-8°C. The kit is stable for 6 months from the date of receipt.

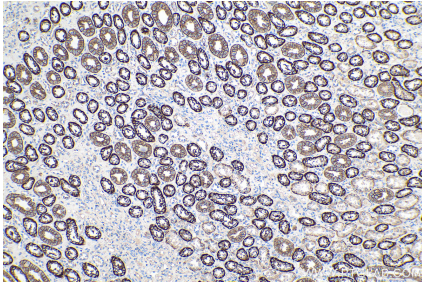
Background

Cadherin-16 (CDH16), also known as kidney-specific cadherin (Ksp-cadherin), is a tissue-specific member of the cadherin family of adhesion molecules. It is a glycoprotein expressed by tubular epithelial cells in the kidney. Cadherin-16 expression is down-regulated in renal cell carcinoma, suggesting a role in tumor suppression.

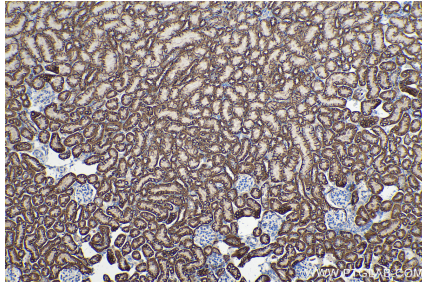
Synonyms

cadherin 16, KSP cadherin, Cadherin-16, CDH16, Kidney specific cadherin, Ksp cadherin

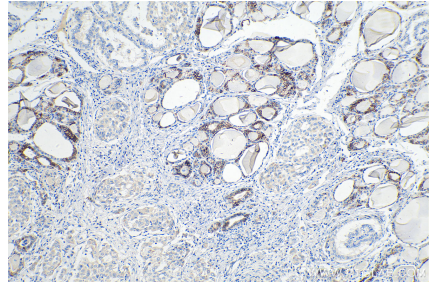
Selected Validation Data



Immunohistochemical analysis of paraffin-embedded human kidney tissue slide using KHC0214 (Cadherin-16 IHC Kit).



Immunohistochemical analysis of paraffin-embedded mouse kidney tissue slide using KHC0214 (Cadherin-16 IHC Kit).



Immunohistochemical analysis of paraffin-embedded human thyroid cancer tissue slide using KHC0214 (Cadherin-16 IHC Kit).