

# IHC*easy* MDK Ready-To-Use IHC Kit

Catalog Number: **KHC0213**

## General Information

Sample type:  
FFPE tissue  
Cited sample type:  
Reactivity:  
Human  
Cited Reactivity:

Assay type:  
Immunohistochemistry  
Primary antibody type:  
Rabbit Polyclonal  
Secondary antibody type:  
Polymer-HRP-Goat anti-Rabbit

## Kit Component

Component	Size	Concentration
Antigen Retrieval Buffer	100 mL	50×
Washing Buffer	100 mL ×2	20×
Blocking Buffer	5 mL	RTU
Primary Antibody	5 mL	RTU
Secondary Antibody	5 mL	RTU
Chromogen Component A	0.2 mL	RTU
Chromogen Component B	4 mL	RTU
Signal Enhancer	5 mL	RTU
Counter Staining Reagent	5 mL	RTU
Mounting Media	5 mL	RTU
Control Slide	1 slide (Optional)	FFPE
Datasheet	1 Copy	
Manual	1 Copy	

## Storage Instructions

All the reagents are stored at 2-8°C. The kit is stable for 6 months from the date of receipt.

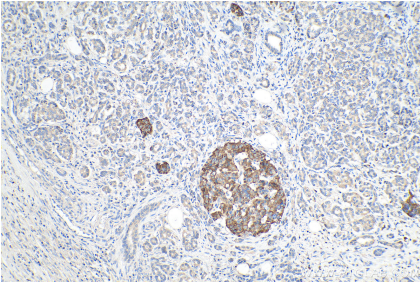
## Background

Midkine is a heparin-binding growth factor identified over 20 years ago and enhances the survival, migration and many other activities of target cells. Midkine is rich in both basic amino acids and cysteine, and is not related to most other growth factors/cytokines. It is strongly expressed during embryonic periods, especially at the midgestation stage, and plays important roles in development, especially in neurogenesis. Midkine expression in adult tissue is generally weak or undetectable, and it is induced upon injury and exerts many activities related to tissue repair. The biological activities of midkine in malignant tumors include proliferation, angiogenesis, invasion and metastasis. Various cancers express significantly higher levels of the midkine protein in early stage tumor tissues than in adjacent normal tissue.

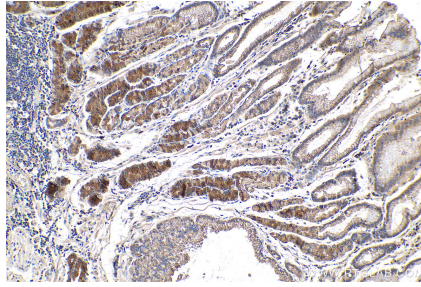
## Synonyms

ARAP, FLJ27379, MDK, Midkine, MK, MK1, NEGF2

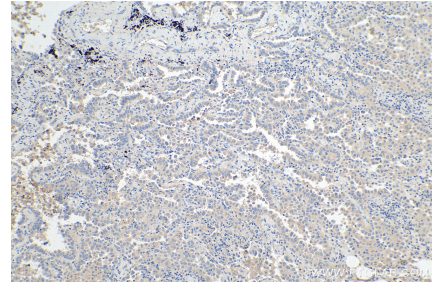
## Selected Validation Data



Immunohistochemical analysis of paraffin-embedded human pancreas cancer tissue slide using KHC0213 (Midkine IHC Kit).



Immunohistochemical analysis of paraffin-embedded human stomach cancer tissue slide using KHC0213 (Midkine IHC Kit).



Immunohistochemical analysis of paraffin-embedded human lung cancer tissue slide using KHC0213 (Midkine IHC Kit).