

IHCeasy Mouse F4/80 Ready-To-Use IHC Kit

Catalog Number: **KHC0208**

General Information

Sample type:
FFPE tissue
Cited sample type:
Reactivity:
Mouse
Cited Reactivity:

Assay type:
Immunohistochemistry
Primary antibody type:
Rabbit Polyclonal
Secondary antibody type:
Polymer-HRP-Goat anti-Rabbit

Kit Component

Component	Size	Concentration
Antigen Retrieval Buffer	100 mL	50×
Washing Buffer	100 mL ×2	20×
Blocking Buffer	5 mL	RTU
Primary Antibody	5 mL	RTU
Secondary Antibody	5 mL	RTU
Chromogen Component A	0.2 mL	RTU
Chromogen Component B	4 mL	RTU
Signal Enhancer	5 mL	RTU
Counter Staining Reagent	5 mL	RTU
Mounting Media	5 mL	RTU
Control Slide	1 slide (Optional)	FFPE
Datasheet	1 Copy	
Manual	1 Copy	

Storage Instructions

All the reagents are stored at 2-8°C. The kit is stable for 6 months from the date of receipt.

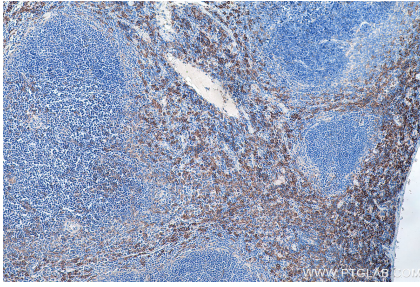
Background

Mouse F4/80, also named as EMR1 and Gpf480, is a 160kd cell surface glycoprotein which is a member of the EGF TM7 family. The F4/80 molecule is solely expressed on the surface of macrophages and serves as a marker for mature macrophage tissues, including Kupffer cells in liver, splenic red pulp macrophages, brain microglia, gut lamina propria and Langerhans cells in the skin. The function of F4/80 is unclear, but it is speculated to be involved in macrophage adhesion events, cell migration or as a G protein-coupled signaling component of macrophages.

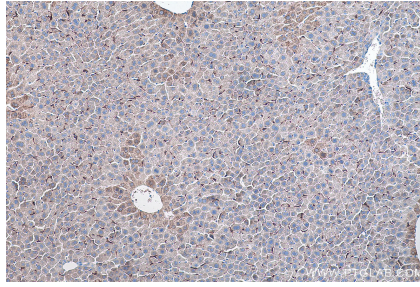
Synonyms

Adgre1, DD7A5 7, EGF TM7, Emr1, F4 80, F4/80, Gpf480, Ly71, TM7LN3

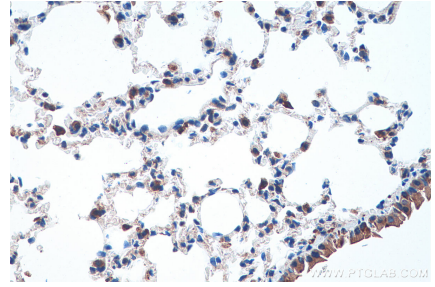
Selected Validation Data



Immunohistochemical analysis of paraffin-embedded mouse spleen tissue slide using KHC0208 (F4/80 IHC Kit).



Immunohistochemical analysis of paraffin-embedded mouse liver tissue slide using KHC0208 (F4/80 IHC Kit).



Immunohistochemical analysis of paraffin-embedded mouse lung tissue slide using KHC0208 (F4/80 IHC Kit).