

IHC*easy* COL2A1 Ready-To-Use IHC Kit

Catalog Number: **KHC0206**

General Information

Sample type:
FFPE tissue
Cited sample type:
Reactivity:
Human
Cited Reactivity:

Assay type:
Immunohistochemistry
Primary antibody type:
Rabbit Polyclonal
Secondary antibody type:
Polymer-HRP-Goat anti-Rabbit

Kit Component

Component	Size	Concentration
Antigen Retrieval Buffer	100 mL	50×
Washing Buffer	100 mL ×2	20×
Blocking Buffer	5 mL	RTU
Primary Antibody	5 mL	RTU
Secondary Antibody	5 mL	RTU
Chromogen Component A	0.2 mL	RTU
Chromogen Component B	4 mL	RTU
Signal Enhancer	5 mL	RTU
Counter Staining Reagent	5 mL	RTU
Mounting Media	5 mL	RTU
Control Slide	1 slide (Optional)	FFPE
Datasheet	1 Copy	
Manual	1 Copy	

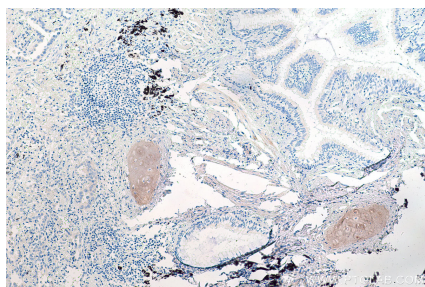
Storage Instructions

All the reagents are stored at 2-8°C. The kit is stable for 6 months from the date of receipt.

Synonyms

Alpha 1 type II collagen, ANFH, AOM, COL11A3, COL2A1, Collagen alpha 1(II) chain, Collagen Type II, collagen, type II, alpha 1, SEDC

Selected Validation Data



Immunohistochemical analysis of paraffin-embedded human lung cancer tissue slide using KHC0206 (Collagen Type II IHC Kit).