

# IHCeasy<sup>®</sup> IGF2BP2 Ready-To-Use IHC Kit

Catalog Number: **KHC0161**

## General Information

Sample type:  
FFPE tissue  
Cited sample type:  
Reactivity:  
Human, Mouse  
Cited Reactivity:

Assay type:  
Immunohistochemistry  
Primary antibody type:  
Rabbit Polyclonal  
Secondary antibody type:  
Polymer-HRP-Goat anti-Rabbit

## Kit Component

Component	Size	Concentration
Antigen Retrieval Buffer	100 mL	50×
Washing Buffer	100 mL ×2	20×
Blocking Buffer	5 mL	RTU
Primary Antibody	5 mL	RTU
Secondary Antibody	5 mL	RTU
Chromogen Component A	0.2 mL	RTU
Chromogen Component B	4 mL	RTU
Signal Enhancer	5 mL	RTU
Counter Staining Reagent	5 mL	RTU
Mounting Media	5 mL	RTU
Control Slide	1 slide (Optional)	FFPE
Datasheet	1 Copy	
Manual	1 Copy	

## Storage Instructions

All the reagents are stored at 2-8°C. The kit is stable for 6 months from the date of receipt.

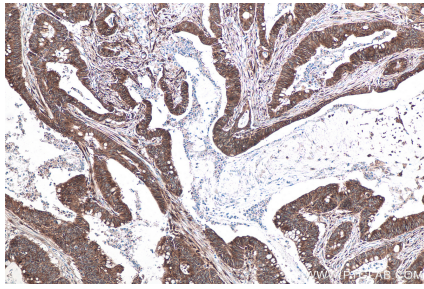
## Background

Insulin-like growth factor 2 mRNA-binding protein 2 (IGF2BP2), is a member of a family of mRNA binding protein, which can bind to several mammalian cells' mRNAs. Thus it may involve in the regulation of translation of mRNA. IGF2BP2's polymorphisms is risk factor for developing type 2 diabetes. Primary antibody in this kit raise against part of N-terminus of human IGF2BP2.

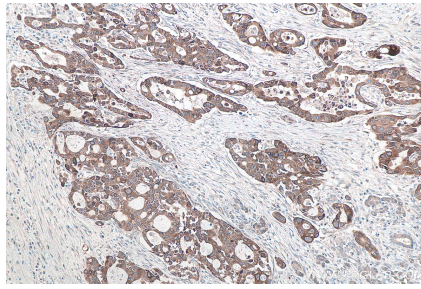
## Synonyms

IGF II mRNA binding protein 2, IGF2 mRNA binding protein 2, IGF2BP2, IMP 2, IMP2, p62, VICKZ family member 2, VICKZ2

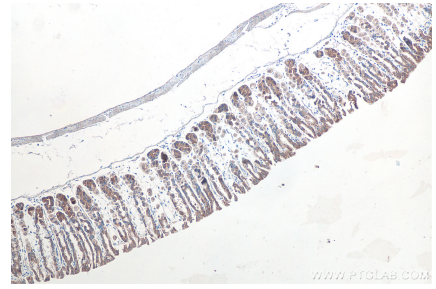
## Selected Validation Data



Immunohistochemical analysis of paraffin-embedded human colon cancer tissue slide using KHC0161 (IGF2BP2 IHC Kit).



Immunohistochemical analysis of paraffin-embedded human pancreas cancer tissue slide using KHC0161 (IGF2BP2 IHC Kit).



Immunohistochemical analysis of paraffin-embedded mouse stomach tissue slide using KHC0161 (IGF2BP2 IHC Kit).