

IHC*easy* VIRMA/KIAA1429 Ready-To-Use IHC Kit

Catalog Number: **KHC0149**

General Information

Sample type:
FFPE tissue
Cited sample type:
Reactivity:
Human, Mouse, Rat
Cited Reactivity:

Assay type:
Immunohistochemistry
Primary antibody type:
Rabbit Polyclonal
Secondary antibody type:
Polymer-HRP-Goat anti-Rabbit

Kit Component

Component	Size	Concentration
Antigen Retrieval Buffer	100 mL	50×
Washing Buffer	100 mL ×2	20×
Blocking Buffer	5 mL	RTU
Primary Antibody	5 mL	RTU
Secondary Antibody	5 mL	RTU
Chromogen Component A	0.2 mL	RTU
Chromogen Component B	4 mL	RTU
Signal Enhancer	5 mL	RTU
Counter Staining Reagent	5 mL	RTU
Mounting Media	5 mL	RTU
Control Slide	1 slide (Optional)	FFPE
Datasheet	1 Copy	
Manual	1 Copy	

Storage Instructions

All the reagents are stored at 2-8°C. The kit is stable for 6 months from the date of receipt.

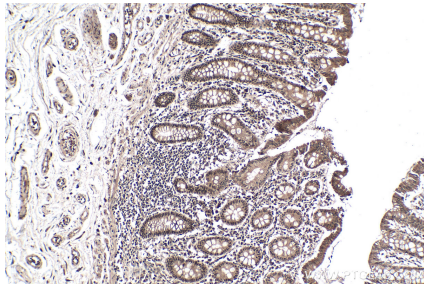
Background

VIRMA (KIAA1429) is a key component of m6A methyltransferase (writer) complex that include METTL3, METTL14, WTAP, VIRMA, HAKAI, ZC3H13, and RBM15. VIRMA mediates methylation in the 3'UTR and around the stop codon, thus affecting alternative polyadenylation. VIRMA has been reported to act as oncogenic factor in breast cancer and liver cancer.

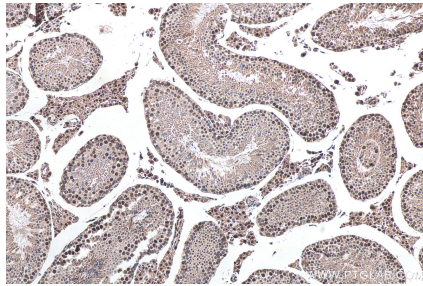
Synonyms

fSAP121, KIAA1429, MSTP054, Protein virilizer homolog, VIRMA, VIRMA/KIAA1429

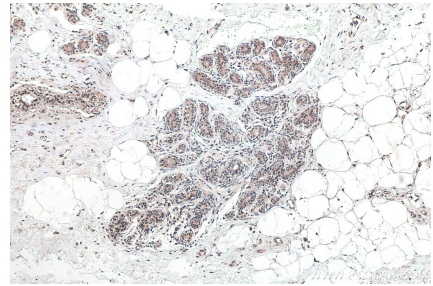
Selected Validation Data



Immunohistochemical analysis of paraffin-embedded human colon tissue slide using KHC0149 (VIRMA/KIAA1429 IHC Kit).



Immunohistochemical analysis of paraffin-embedded mouse testis tissue slide using KHC0149 (VIRMA/KIAA1429 IHC Kit).



Immunohistochemical analysis of paraffin-embedded human breast cancer tissue slide using KHC0149 (VIRMA/KIAA1429 IHC Kit).