

IHC*easy* GLI2 Ready-To-Use IHC Kit

Catalog Number: **KHC0136**

General Information

Sample type:
FFPE tissue
Cited sample type:
Reactivity:
Human, Rat
Cited Reactivity:

Assay type:
Immunohistochemistry
Primary antibody type:
Rabbit Polyclonal
Secondary antibody type:
Polymer-HRP-Goat anti-Rabbit

Kit Component

Component	Size	Concentration
Antigen Retrieval Buffer	100 mL	50×
Washing Buffer	100 mL ×2	20×
Blocking Buffer	5 mL	RTU
Primary Antibody	5 mL	RTU
Secondary Antibody	5 mL	RTU
Chromogen Component A	0.2 mL	RTU
Chromogen Component B	4 mL	RTU
Signal Enhancer	5 mL	RTU
Counter Staining Reagent	5 mL	RTU
Mounting Media	5 mL	RTU
Control Slide	1 slide (Optional)	FFPE
Datasheet	1 Copy	
Manual	1 Copy	

Storage Instructions

All the reagents are stored at 2-8°C. The kit is stable for 6 months from the date of receipt.

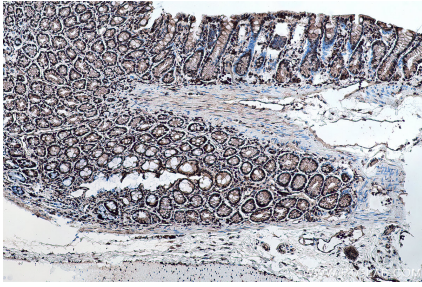
Background

GLI2, also named as THP, belongs to the GLI C2H2-type zinc-finger protein family. GLI2 play a role during embryogenesis. It binds to the DNA sequence 5'-GAACCACCCA-3' which is part of the TRE-25 regulatory element that augments the Tax-dependent enhancer of human T-cell leukemia virus type 1. It is implicated in the transduction of SHH signal. Mutation of GLI2 will cause of holoprosencephaly type 9 (HPE9).

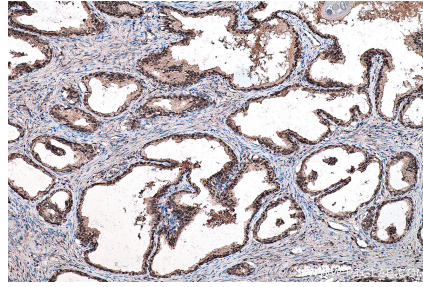
Synonyms

AW546128, GLI Kruppel family member GLI2, Gli2

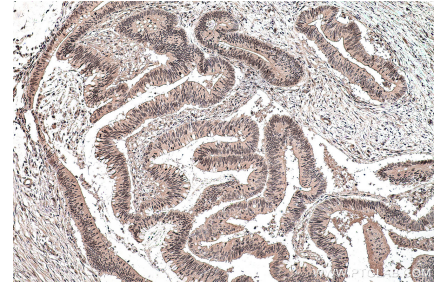
Selected Validation Data



Immunohistochemical analysis of paraffin-embedded rat colon tissue slide using KHC0136 (GLI2-Specific IHC Kit).



Immunohistochemical analysis of paraffin-embedded human prostate cancer tissue slide using KHC0136 (GLI2-Specific IHC Kit).



Immunohistochemical analysis of paraffin-embedded human colon cancer tissue slide using KHC0136 (GLI2-Specific IHC Kit).