

IHC*easy* AKT Ready-To-Use IHC Kit

Catalog Number: **KHC0115**

General Information

Sample type:
FFPE tissue

Cited sample type:

Reactivity:
Human, Mouse, Rat

Cited Reactivity:

Assay type:
Immunohistochemistry

Primary antibody type:
Mouse Monoclonal

Secondary antibody type:
Polymer-HRP-Goat anti-Mouse

Kit Component

Component	Size	Concentration
Antigen Retrieval Buffer	100 mL	50×
Washing Buffer	100 mL × 2	20×
Blocking Buffer	5 mL	RTU
Primary Antibody	5 mL	RTU
Secondary Antibody	5 mL	RTU
Chromogen Component A	0.2 mL	RTU
Chromogen Component B	4 mL	RTU
Signal Enhancer	5 mL	RTU
Counter Staining Reagent	5 mL	RTU
Mounting Media	5 mL	RTU
Control Slide	1 slide (Optional)	FFPE
Datasheet	1 Copy	
Manual	1 Copy	

Storage Instructions

All the reagents are stored at 2-8°C. The kit is stable for 6 months from the date of receipt.

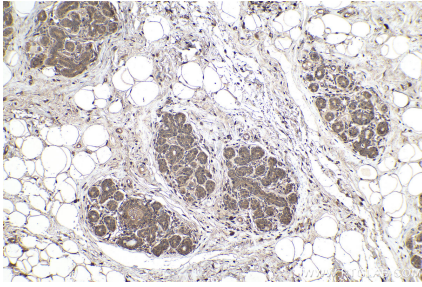
Background

The serine-threonine protein kinase AKT1 is catalytically inactive in serum-starved primary and immortalized fibroblasts. Survival factors can suppress apoptosis in a transcription-independent manner by activating the serine/threonine kinase AKT1, which then phosphorylates and inactivates components of the apoptotic machinery. This kit could detect AKT1, AKT2, AKT3 and their phosphorylated form.

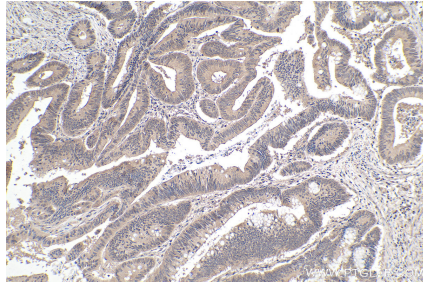
Synonyms

AKT, AKT (pan), AKT pan, AKT1, AKT1/2/3, pan AKT, PKB, PKB ALPHA, PRKBA, Protein kinase B, Proto oncogene c Akt, RAC, RAC ALPHA, RAC PK alpha, total AKT

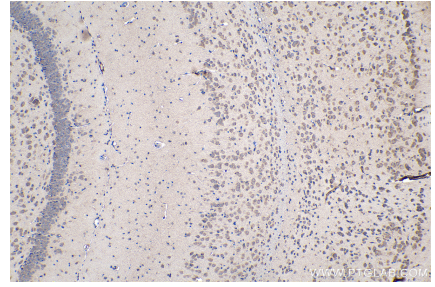
Selected Validation Data



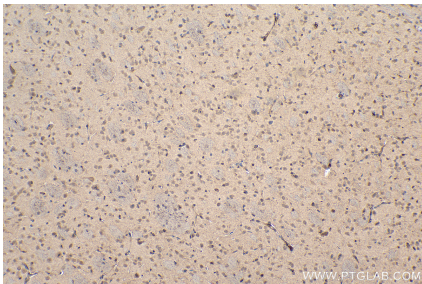
Immunohistochemical analysis of paraffin-embedded human breast cancer tissue slide using KHC0115 (AKT IHC Kit).



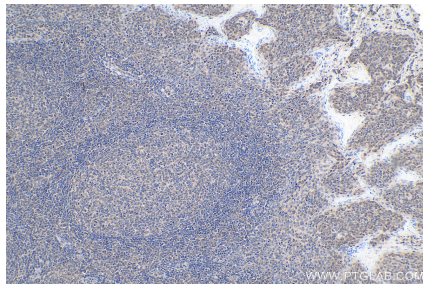
Immunohistochemical analysis of paraffin-embedded human colon cancer tissue slide using KHC0115 (AKT IHC Kit).



Immunohistochemical analysis of paraffin-embedded rat brain tissue slide using KHC0115 (AKT IHC Kit).



Immunohistochemical analysis of paraffin-embedded mouse brain tissue slide using KHC0115 (AKT IHC Kit).



Immunohistochemical analysis of paraffin-embedded human tonsillitis tissue slide using KHC0115 (AKT IHC Kit).