

IHCeasy[®] CR1/CD35 Ready-To-Use IHC Kit

Catalog Number: **KHC0102**

General Information

Sample type:
FFPE tissue
Cited sample type:
Reactivity:
Human
Cited Reactivity:

Assay type:
Immunohistochemistry
Primary antibody type:
Mouse Monoclonal
Secondary antibody type:
Polymer-HRP-Goat anti-Mouse

Kit Component

Component	Size	Concentration
Antigen Retrieval Buffer	100 mL	50×
Washing Buffer	100 mL ×2	20×
Blocking Buffer	5 mL	RTU
Primary Antibody	5 mL	RTU
Secondary Antibody	5 mL	RTU
Chromogen Component A	0.2 mL	RTU
Chromogen Component B	4 mL	RTU
Signal Enhancer	5 mL	RTU
Counter Staining Reagent	5 mL	RTU
Mounting Media	5 mL	RTU
Control Slide	1 slide (Optional)	FFPE
Datasheet	1 Copy	
Manual	1 Copy	

Storage Instructions

All the reagents are stored at 2-8°C. The kit is stable for 6 months from the date of receipt.

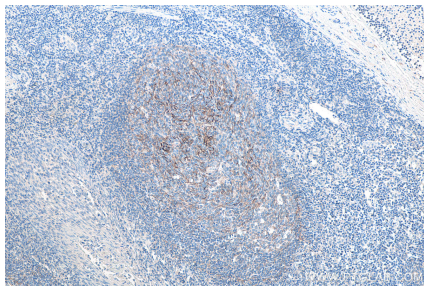
Background

Complement receptor type 1 (CR1), also known as C3b/C4b receptor or CD35, is a single-chain glycoprotein consisting of 30 repeating homologous protein domains known as short consensus repeats (~60 amino acids each) followed by transmembrane and cytoplasmic domains. CR1 is variably expressed by granulocytes, monocytes, B cells, some T cells, erythrocytes, follicular dendritic cells, Langerhan cells and glomerular podocytes. CR1 acts as a receptor for C3b and C4b and plays important roles in regulation of the complement cascade and clearance of immune complexes. A soluble form of CR1 (sCR1) has been found in plasma. It has been reported that sCR1 is produced by a proteolytic cleavage in the C-terminal region of CR1 transmembrane domain.

Synonyms

C3b/C4b receptor, C3BR, CD35, Complement receptor type 1, CR1, KN

Selected Validation Data



Immunohistochemical analysis of paraffin-embedded human tonsillitis tissue slide using KHC0102 (CR1/CD35 IHC Kit).