

# IHC*easy* Ezrin Ready-To-Use IHC Kit

Catalog Number: **KHC0094**

## General Information

Sample type:  
FFPE tissue  
Cited sample type:  
Reactivity:  
Human, Mouse  
Cited Reactivity:

Assay type:  
Immunohistochemistry  
Primary antibody type:  
Rabbit Polyclonal  
Secondary antibody type:  
Polymer-HRP-Goat anti-Rabbit

## Kit Component

Component	Size	Concentration
Antigen Retrieval Buffer	100 mL	50×
Washing Buffer	100 mL ×2	20×
Blocking Buffer	5 mL	RTU
Primary Antibody	5 mL	RTU
Secondary Antibody	5 mL	RTU
Chromogen Component A	0.2 mL	RTU
Chromogen Component B	4 mL	RTU
Signal Enhancer	5 mL	RTU
Counter Staining Reagent	5 mL	RTU
Mounting Media	5 mL	RTU
Control Slide	1 slide (Optional)	FFPE
Datasheet	1 Copy	
Manual	1 Copy	

## Storage Instructions

All the reagents are stored at 2-8°C. The kit is stable for 6 months from the date of receipt.

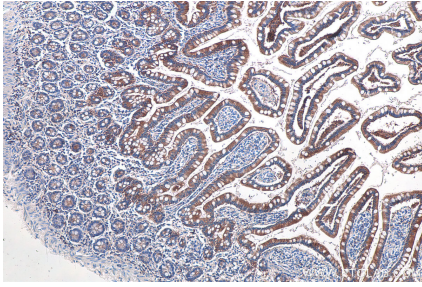
## Background

Three closely related proteins, Ezrin, Radixin, and Moesin, or named as ERM family, work as cross-linkers between plasma membranes and actin-based cytoskeletons. Emerging evidence suggest that Ezrin is an oncogene protein, as high levels of Ezrin are associated with metastatic behavior in various types of cancer such as osteosarcoma, lung cancer, colorectal cancer, breast cancer, etc.. Ezrin is also involved in EMT (Epithelial-Mesenchymal Transition) progress.

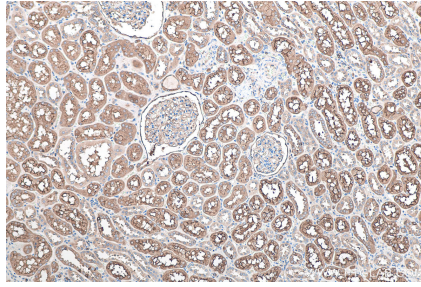
## Synonyms

CVIL, CVL, Cytovillin, EZR, Ezrin, p81, VIL2, Villin 2

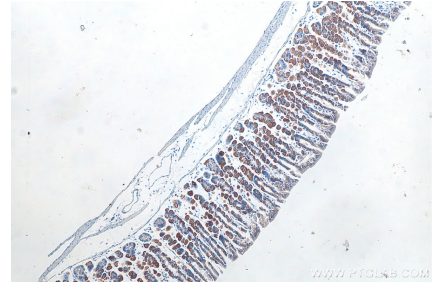
## Selected Validation Data



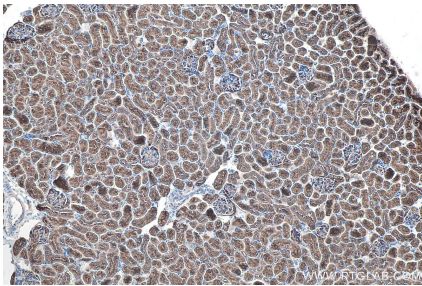
Immunohistochemical analysis of paraffin-embedded human small intestine tissue slide using KHC0094 (Ezrin IHC Kit).



Immunohistochemical analysis of paraffin-embedded human kidney tissue slide using KHC0094 (Ezrin IHC Kit).



Immunohistochemical analysis of paraffin-embedded mouse stomach tissue slide using KHC0094 (Ezrin IHC Kit).



Immunohistochemical analysis of paraffin-embedded mouse kidney tissue slide using KHC0094 (Ezrin IHC Kit).