

IHCeasy Podoplanin Ready-To-Use IHC Kit

Catalog Number: **KHC0092**

General Information

Sample type: FFPE tissue	Assay type: Immunohistochemistry
Cited sample type:	Primary antibody type: Mouse Monoclonal
Reactivity: Human	Secondary antibody type: Polymer-HRP-Goat anti-Mouse
Cited Reactivity:	

Kit Component

Component	Size	Concentration
Antigen Retrieval Buffer	100 mL	50×
Washing Buffer	100 mL ×2	20×
Blocking Buffer	5 mL	RTU
Primary Antibody	5 mL	RTU
Secondary Antibody	5 mL	RTU
Chromogen Component A	0.2 mL	RTU
Chromogen Component B	4 mL	RTU
Signal Enhancer	5 mL	RTU
Counter Staining Reagent	5 mL	RTU
Mounting Media	5 mL	RTU
Control Slide	1 slide (Optional)	FFPE
Datasheet	1 Copy	
Manual	1 Copy	

Storage Instructions

All the reagents are stored at 2-8°C. The kit is stable for 6 months from the date of receipt.

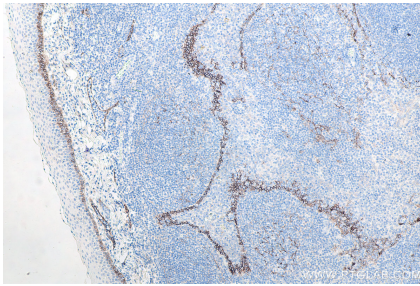
Background

Podoplanin (PDPN) was identified as a glycoprotein found in the cell membranes of glomerular epithelial cells (podocyte). It is a lymphatic marker because the expression of podoplanin has been detected in lymphatic but not blood vascular endothelium, and is useful as the marker of tumor-associated lymphangiogenesis. Podoplanin has a function in developing testis, most likely at the level of cell-cell interactions among pre-meiotic germ cells and immature Sertoli cells. It may be involved in cell migration and/or actin cytoskeleton organization. When expressed in keratinocytes, PDPN induces changes in cell morphology with transfected cells showing an elongated shape, numerous membrane protrusions, major reorganization of the actin cytoskeleton, increased motility and decreased cell adhesion. It is required for normal lung cell proliferation and alveolus formation at birth. PDPN induces platelet aggregation. It does not have any effect on folic acid or amino acid transport and does not function as a water channel or as a regulator of aquaporin-type water channels.

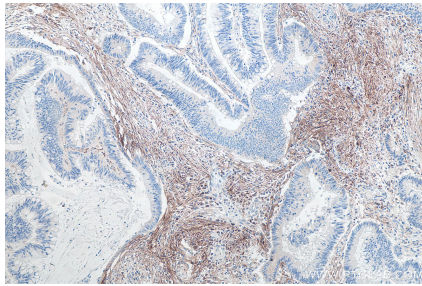
Synonyms

AGGRUS, D2 40,M2A, Glycoprotein 36, GP36, Gp38, GP40, HT1A 1, M2A, OTS8, PA2.26, PA2.26 antigen, PDPN, podoplanin, PSEC0025, T1 alpha, T1A, T1A 2

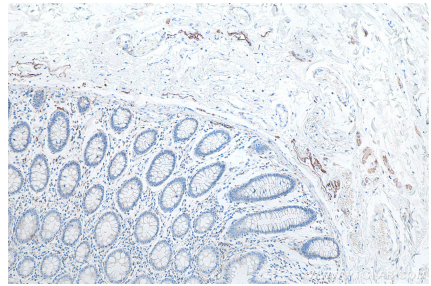
Selected Validation Data



Immunohistochemical analysis of paraffin-embedded human tonsillitis tissue slide using KHC0092 (Podoplanin IHC Kit).



Immunohistochemical analysis of paraffin-embedded human colon cancer tissue slide using KHC0092 (Podoplanin IHC Kit).



Immunohistochemical analysis of paraffin-embedded human colon tissue slide using KHC0092 (Podoplanin IHC Kit).