

IHC*easy* Podocalyxin Ready-To-Use IHC Kit

Catalog Number: **KHC0087**

General Information

Sample type:
FFPE tissue
Cited sample type:
Reactivity:
Human
Cited Reactivity:

Assay type:
Immunohistochemistry
Primary antibody type:
Rabbit Polyclonal
Secondary antibody type:
Polymer-HRP-Goat anti-Rabbit

Kit Component

Component	Size	Concentration
Antigen Retrieval Buffer	100 mL	50×
Washing Buffer	100 mL ×2	20×
Blocking Buffer	5 mL	RTU
Primary Antibody	5 mL	RTU
Secondary Antibody	5 mL	RTU
Chromogen Component A	0.2 mL	RTU
Chromogen Component B	4 mL	RTU
Signal Enhancer	5 mL	RTU
Counter Staining Reagent	5 mL	RTU
Mounting Media	5 mL	RTU
Control Slide	1 slide (Optional)	FFPE
Datasheet	1 Copy	
Manual	1 Copy	

Storage Instructions

All the reagents are stored at 2-8°C. The kit is stable for 6 months from the date of receipt.

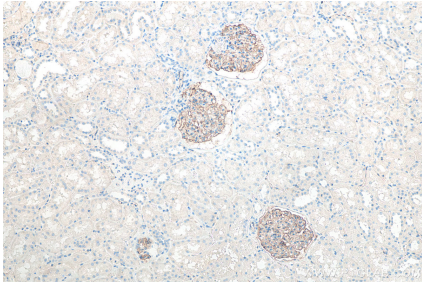
Background

Podocalyxin, also known as podocalyxin-like protein 1 (PODXL or PCLP1), is a transmembrane glycoprotein belonging to the CD34 family of sialomucins. Podocalyxin was originally identified as the major sialoprotein on podocytes of the kidney glomerulus, but was later found to be expressed on vascular endothelial cells and early hematopoietic progenitors. It involved in the regulation of both adhesion and cell morphology. In addition, podocalyxin is highly expressed in embryonic stem cells and aberrant expression of podocalyxin has been implicated in a wide range of cancers.

Synonyms

GCTM 2 antigen, Gp200, PC, PCLP, PCLP 1, PCLP1, Podocalyxin, podocalyxin like, Podocalyxin like protein 1, PODXL, RCC marker, Renal Cell Carcinoma marker, TRA 1 81, TRA 1 60, TRA-1-60

Selected Validation Data



Immunohistochemical analysis of paraffin-embedded human kidney tissue slide using KHC0087 (Podocalyxin IHC Kit).