

IHCeasy[®] PTPRO Ready-To-Use IHC Kit

Catalog Number: **KHC0082**

General Information

Sample type:
FFPE tissue
Cited sample type:
Reactivity:
Human, Mouse
Cited Reactivity:

Assay type:
Immunohistochemistry
Primary antibody type:
Mouse Monoclonal
Secondary antibody type:
Polymer-HRP-Goat anti-Mouse

Kit Component

Component	Size	Concentration
Antigen Retrieval Buffer	100 mL	50×
Washing Buffer	100 mL × 2	20×
Blocking Buffer	5 mL	RTU
Primary Antibody	5 mL	RTU
Secondary Antibody	5 mL	RTU
Chromogen Component A	0.2 mL	RTU
Chromogen Component B	4 mL	RTU
Signal Enhancer	5 mL	RTU
Counter Staining Reagent	5 mL	RTU
Mounting Media	5 mL	RTU
Control Slide	1 slide (Optional)	FFPE
Datasheet	1 Copy	
Manual	1 Copy	

Storage Instructions

All the reagents are stored at 2-8°C. The kit is stable for 6 months from the date of receipt.

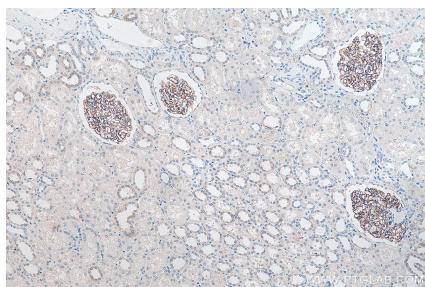
Background

PTPRO (receptor-type tyrosine-protein phosphatase O) is also named as GLEPP1, PTPU2 and belongs to the protein-tyrosine phosphatase family. The protein is a receptor-like membrane protein tyrosine phosphatase expressed at the apical membrane of the podocyte foot processes in the kidney. PTPRO has been frequently reported as potential tumor suppressor in many types of cancer.

Synonyms

GLEPP1, PTP U2, PTPase U2, PTPRO, PTPU2, R PTP O

Selected Validation Data



Immunohistochemical analysis of paraffin-embedded human kidney tissue slide using KHC0082 (PTPRO IHC Kit).