

IHC*easy* Human IgG4 Ready-To-Use IHC Kit

Catalog Number: **KHC0074**

General Information

Sample type:
FFPE tissue
Cited sample type:
Reactivity:
Human
Cited Reactivity:

Assay type:
Immunohistochemistry
Primary antibody type:
Mouse Monoclonal
Secondary antibody type:
Polymer-HRP-Goat anti-Mouse

Kit Component

| Component | Size | Concentration |
|--------------------------|--------------------|---------------|
| Antigen Retrieval Buffer | 100 mL | 50× |
| Washing Buffer | 100 mL ×2 | 20× |
| Blocking Buffer | 5 mL | RTU |
| Primary Antibody | 5 mL | RTU |
| Secondary Antibody | 5 mL | RTU |
| Chromogen Component A | 0.2 mL | RTU |
| Chromogen Component B | 4 mL | RTU |
| Signal Enhancer | 5 mL | RTU |
| Counter Staining Reagent | 5 mL | RTU |
| Mounting Media | 5 mL | RTU |
| Control Slide | 1 slide (Optional) | FFPE |
| Datasheet | 1 Copy | |
| Manual | 1 Copy | |

Storage Instructions

All the reagents are stored at 2-8°C. The kit is stable for 6 months from the date of receipt.

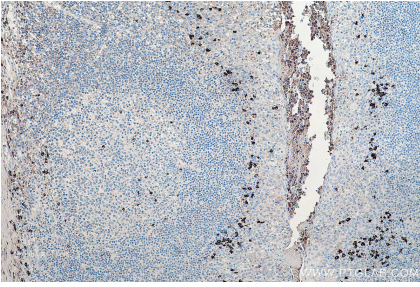
Background

Serum IgG4 is a subtype of IgG, and its levels are frequently elevated and particularly high in autoimmune pancreatitis (AIP) as well as other disease. It's now a common concept that IgG4 related disease (IgG4-RD) is a systemic immune-mediated fibro-inflammatory condition often involving several organ systems, especially pancreas and salivary glands. A serum IgG4 cut off level of 135mg/mL was considered a reliable marker predictive of IgG4-RD. IgG4 positive plasma cell infiltration is also ubiquitous in IgG4-RD.

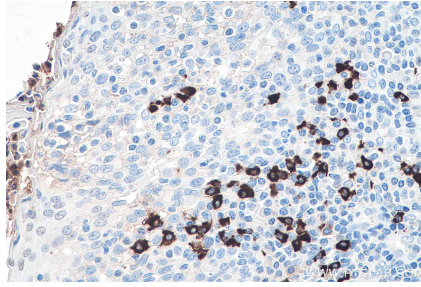
Synonyms

Human IgG4, IgG4, IGHG4

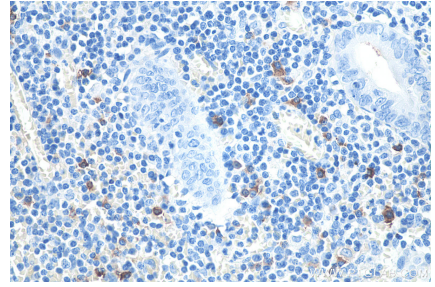
Selected Validation Data



Immunohistochemical analysis of paraffin-embedded human tonsillitis tissue slide using KHC0074 (Human IgG4 IHC Kit).



Immunohistochemical analysis of paraffin-embedded human tonsillitis tissue slide using KHC0074 (Human IgG4 IHC Kit).



Immunohistochemical analysis of paraffin-embedded human appendicitis tissue slide using KHC0074 (Human IgG4 IHC Kit).