

# IHC*easy* Napsin A Ready-To-Use IHC Kit

Catalog Number: **KHC0068**

## General Information

Sample type:  
FFPE tissue  
Cited sample type:  
Reactivity:  
Human, Mouse  
Cited Reactivity:

Assay type:  
Immunohistochemistry  
Primary antibody type:  
Mouse Monoclonal  
Secondary antibody type:  
Polymer-HRP-Goat anti-Mouse

## Kit Component

Component	Size	Concentration
Antigen Retrieval Buffer	100 mL	50×
Washing Buffer	100 mL ×2	20×
Blocking Buffer	5 mL	RTU
Primary Antibody	5 mL	RTU
Secondary Antibody	5 mL	RTU
Chromogen Component A	0.2 mL	RTU
Chromogen Component B	4 mL	RTU
Signal Enhancer	5 mL	RTU
Counter Staining Reagent	5 mL	RTU
Mounting Media	5 mL	RTU
Control Slide	1 slide (Optional)	FFPE
Datasheet	1 Copy	
Manual	1 Copy	

## Storage Instructions

All the reagents are stored at 2-8°C. The kit is stable for 6 months from the date of receipt.

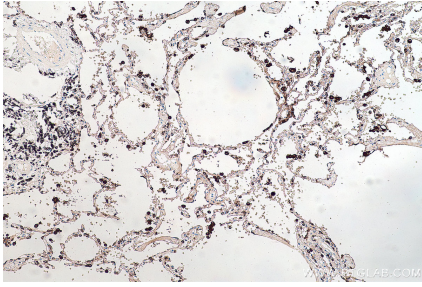
## Background

Napsin A, a member of the aspartic protease family, is concluded to have a specific functional role in the normal alveolar epithelium and is a candidate protease for the proteolytic processing of surfactant precursors. It has been reported that Napsin A is a sensitive marker for pulmonary adenocarcinoma and is also expressed in a subset of renal cell carcinomas, particularly of the papillary type, as well as in rare cases of papillary thyroid carcinomas.

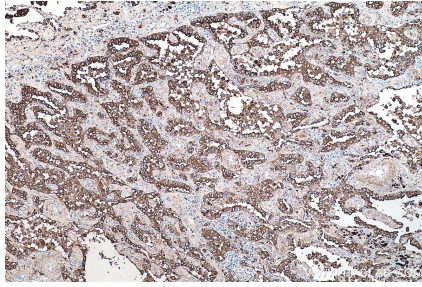
## Synonyms

Asp 4, ASP4, Aspartyl protease 4, KAP, Kdap, NAP1, NAPA, NAPSA, Napsin 1, Napsin A, napsin A aspartic peptidase, Pronapsin A, SNAPA, TA01/TA02

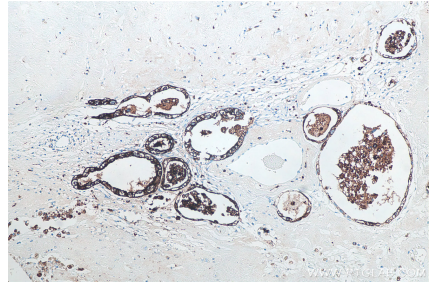
## Selected Validation Data



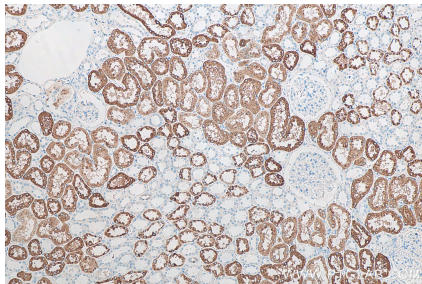
Immunohistochemical analysis of paraffin-embedded human lung cancer tissue slide using KHC0068 (Napsin A IHC Kit).



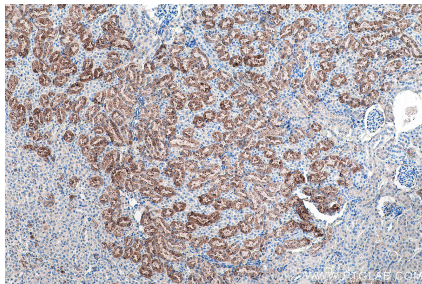
Immunohistochemical analysis of paraffin-embedded human lung cancer tissue slide using KHC0068 (Napsin A IHC Kit).



Immunohistochemical analysis of paraffin-embedded human clear cell ovarian carcinoma tissue slide using KHC0068 (Napsin A IHC Kit).



Immunohistochemical analysis of paraffin-embedded human kidney tissue slide using KHC0068 (Napsin A IHC Kit).



Immunohistochemical analysis of paraffin-embedded mouse kidney tissue slide using KHC0068 (Napsin A IHC Kit).