

IHC*easy* PSMA/FOLH1 Ready-To-Use IHC Kit

Catalog Number: **KHC0066**

General Information

Sample type:
FFPE tissue
Cited sample type:
Reactivity:
Human, Mouse, Rat
Cited Reactivity:

Assay type:
Immunohistochemistry
Primary antibody type:
Mouse Monoclonal
Secondary antibody type:
Polymer-HRP-Goat anti-Mouse

Kit Component

Component	Size	Concentration
Antigen Retrieval Buffer	100 mL	50×
Washing Buffer	100 mL ×2	20×
Blocking Buffer	5 mL	RTU
Primary Antibody	5 mL	RTU
Secondary Antibody	5 mL	RTU
Chromogen Component A	0.2 mL	RTU
Chromogen Component B	4 mL	RTU
Signal Enhancer	5 mL	RTU
Counter Staining Reagent	5 mL	RTU
Mounting Media	5 mL	RTU
Control Slide	1 slide (Optional)	FFPE
Datasheet	1 Copy	
Manual	1 Copy	

Storage Instructions

All the reagents are stored at 2-8°C. The kit is stable for 6 months from the date of receipt.

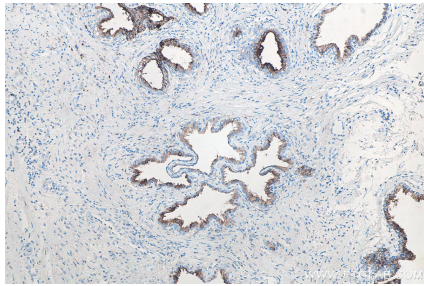
Background

PSMA (Prostate-specific membrane antigen) is also named as FOLH1, FOLH, NAALAD1, PSM and belongs to the peptidase M28 family. PSMA is a 100-120 kDa integral transmembrane glycoprotein, considered to be a highly specific marker of the prostate gland, and has successfully been used as a marker of circulating prostatic epithelial cells. It is involved in conversion of the major neurotransmitter (NAAG) to NAA and free glutamate.

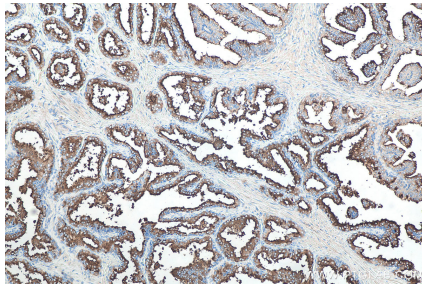
Synonyms

FGCP, Folate hydrolase 1, FOLH, FOLH1, GCP2, GCPII, Glutamate carboxypeptidase 2, Glutamate carboxypeptidase II, mGCP, NAALAD1, NAALAdase, NAALADase I, PSM, PSMA, PSMA/GCPII

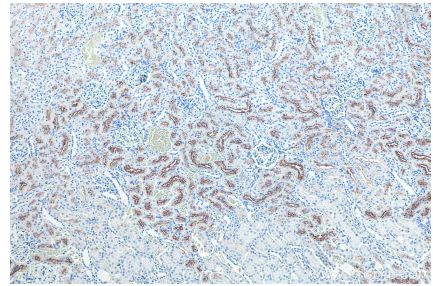
Selected Validation Data



Immunohistochemical analysis of paraffin-embedded human prostate cancer tissue slide using KHC0066 (PSMA/FOLH1 IHC Kit).



Immunohistochemical analysis of paraffin-embedded human prostate hyperplasia tissue slide using KHC0066 (PSMA/FOLH1 IHC Kit).



Immunohistochemical analysis of paraffin-embedded rat kidney tissue slide using KHC0066 (PSMA/FOLH1 IHC Kit).