

# IHC*easy* CD11c Ready-To-Use IHC Kit

Catalog Number: **KHC0017**

## General Information

Sample type:  
FFPE tissue  
Cited sample type:  
Reactivity:  
Human  
Cited Reactivity:

Assay type:  
Immunohistochemistry  
Primary antibody type:  
Mouse Monoclonal  
Secondary antibody type:  
Polymer-HRP-Goat anti-Mouse

## Kit Component

Component	Size	Concentration
Antigen Retrieval Buffer	100 mL	50×
Washing Buffer	100 mL × 2	20×
Blocking Buffer	5 mL	RTU
Primary Antibody	5 mL	RTU
Secondary Antibody	5 mL	RTU
Chromogen Component A	0.2 mL	RTU
Chromogen Component B	4 mL	RTU
Signal Enhancer	5 mL	RTU
Counter Staining Reagent	5 mL	RTU
Mounting Media	5 mL	RTU
Control Slide	1 slide (Optional)	FFPE
Datasheet	1 Copy	
Manual	1 Copy	

## Storage Instructions

All the reagents are stored at 2-8°C. The kit is stable for 6 months from the date of receipt.

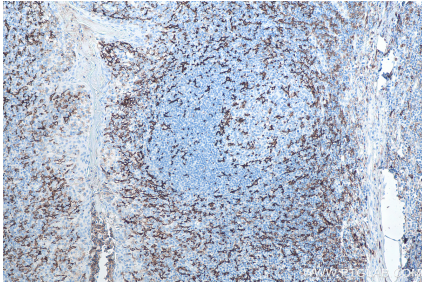
## Background

Integrins are cell adhesion receptors that are heterodimers composed of non-covalently associated  $\alpha$  and  $\beta$  subunits. CD11c/Integrin alpha X is a 145-150 kDa type I transmembrane glycoprotein present on a variety of cells, including monocytes/macrophages, granulocytes, NK cells and dendritic cells. Integrin alpha X/beta 2 acts a receptor for fibrinogen and is important in monocyte adhesion and chemotaxis.

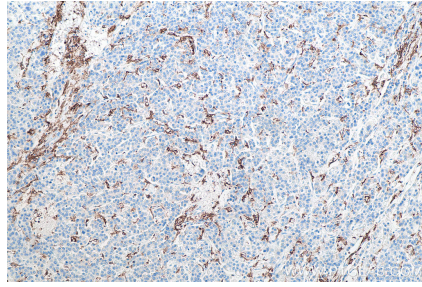
## Synonyms

CD11C, Integrin alpha X, ITGAX, Leu M5, SLEB6

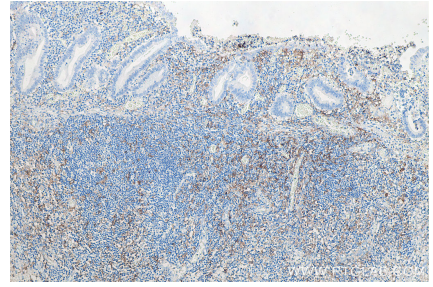
## Selected Validation Data



Immunohistochemical analysis of paraffin-embedded human tonsillitis tissue slide using KHC0017 (CD11c IHC Kit).



Immunohistochemical analysis of paraffin-embedded human liver cancer tissue slide using KHC0017 (CD11c IHC Kit).



Immunohistochemical analysis of paraffin-embedded human appendicitis tissue slide using KHC0017 (CD11c IHC Kit).