

# IHCeasy E-cadherin Ready-To-Use IHC Kit

Catalog Number: **KHC0010**

## General Information

<b>Sample type:</b> FFPE tissue	<b>Assay type:</b> Immunohistochemistry
<b>Cited sample type:</b>	<b>Primary antibody type:</b> Mouse Monoclonal
<b>Reactivity:</b> Human, Rat	<b>Secondary antibody type:</b> Polymer-HRP-Goat anti-Mouse
<b>Cited Reactivity:</b>	

## Kit Component

Component	Size	Concentration
Antigen Retrieval Buffer	100 mL	50×
Washing Buffer	100 mL ×2	20×
Blocking Buffer	5 mL	RTU
Primary Antibody	5 mL	RTU
Secondary Antibody	5 mL	RTU
Chromogen Component A	0.2 mL	RTU
Chromogen Component B	4 mL	RTU
Signal Enhancer	5 mL	RTU
Counter Staining Reagent	5 mL	RTU
Mounting Media	5 mL	RTU
Control Slide	1 slide (Optional)	FFPE
Datasheet	1 Copy	
Manual	1 Copy	

## Storage Instructions

All the reagents are stored at 2-8°C. The kit is stable for 6 months from the date of receipt.

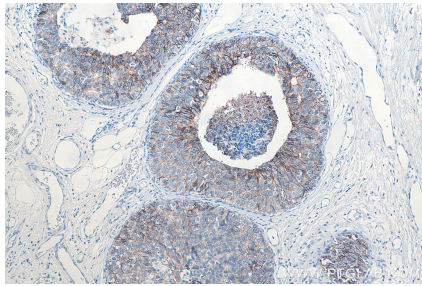
## Background

Cadherins are a family of transmembrane glycoproteins that mediate calcium-dependent cell-cell adhesion and play an important role in the maintenance of normal tissue architecture. E-cadherin (epithelial cadherin), also known as CDH1 (cadherin 1) or CAM 120/80, is a classical member of the cadherin superfamily which also include N-, P-, R-, and B-cadherins. It has been regarded as a marker for spermatogonial stem cells in mice. E-cadherin is expressed on the cell surface in most epithelial tissues. The extracellular region of E-cadherin establishes calcium-dependent homophilic trans binding, providing specific interaction with adjacent cells, while the cytoplasmic domain is connected to the actin cytoskeleton through the interaction with p120-,  $\alpha$ -,  $\beta$ -, and  $\gamma$ -catenin (plakoglobin). E-cadherin is important in the maintenance of the epithelial integrity, and is involved in mechanisms regulating proliferation, differentiation, and survival of epithelial cell. E-cadherin may also play a role in tumorigenesis. It is considered to be an invasion suppressor protein and its loss is an indicator of high tumor aggressiveness.

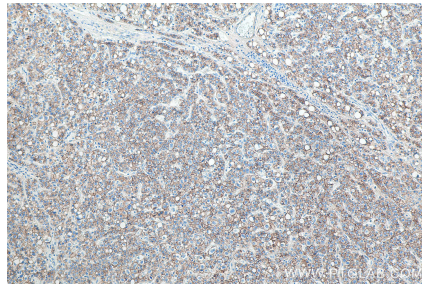
## Synonyms

Arc 1, Cadherin 1, CAM 120/80, CD324, CDH1, CDHE, E cadherin, ECAD, ecadherin, E-cadherin, Epithelial cadherin, LCAM, UVO, Uvomorulin

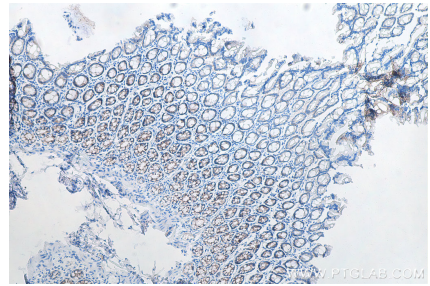
## Selected Validation Data



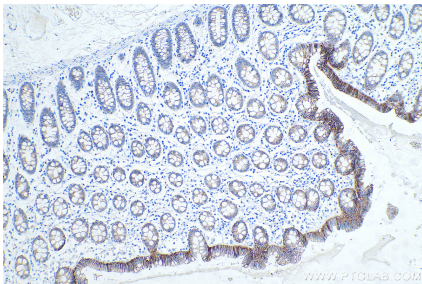
Immunohistochemical analysis of paraffin-embedded human breast cancer tissue slide using KHC0010 (E-cadherin IHC Kit)



Immunohistochemical analysis of paraffin-embedded human liver cancer tissue slide using KHC0010 (E-cadherin IHC Kit).



Immunohistochemical analysis of paraffin-embedded rat colon tissue slide using KHC0010 (E-cadherin IHC Kit)



Immunohistochemical analysis of paraffin-embedded human colon tissue slide using KHC0010 (E-cadherin IHC Kit).