

# FlexAble 2.0 CoraLite® Plus 555

## Antibody Labeling Kit for Mouse IgG1

Catalog Number: KFA522

### 产品介绍

Product name	FlexAble 2.0 CoraLite® Plus 555 Antibody Labeling Kit for Mouse IgG1
Assay type	Antibody labeling
Tested applications	IF, FC, WB
Species Reactivity	Mouse IgG1
Antibody amount per labeling reaction	0.5 µg antibody
Conjugate	CoraLite® Plus 555
Excitation / Emission maxima wavelengths	554 nm/ 570 nm

### 产品成分

Component	10 rxns	50 rxns	200 rxns
CoraLite® Plus 555 FlexLinker 2.0 for Mouse IgG1	10 µL	50 µL	200 µL
FlexQuencher for Mouse IgG1	20 µL	100 µL	400 µL
FlexBuffer	100 µL	500 µL	2000 µL

### 包装规格

10/ 50/ 200 reactions

### 保存条件

Store for 1 year at -20°C or for 6 months at +4°C upon receipt. Avoid exposure to light.

### 其他

Q: What is the difference between FlexAble and FlexAble 2.0 products?

A: FlexAble 2.0 has been improved to allow for more dyes per FlexLinker than the previous version of the kit. This results in an increased signal per antibody.

Q: What are the FlexLinker, FlexQuencher and FlexBuffer?

A: The FlexLinker is a small polypeptide to which dyes are covalently conjugated that can label unconjugated primary antibodies. The FlexQuencher is an Fc-containing fragment that neutralizes the excess FlexLinker. The FlexBuffer is a PBS-based buffer.

Q: What is the largest quantity I can label?

A: With a standard kit size (50 reactions), you can label 25 µg of one antibody or up to 50 different antibodies. You can easily scale up the antibody amount per labeling approach.

Q: What is the lowest concentration of my primary antibody that I can use?

A: Our protocol uses 0.5 µg of primary antibody in 7 µL, which ends up at 0.07 mg/mL. If the concentration of your antibody is lower, you can also use a larger volume than 7 µL.

Q: Can I label primary antibodies stored in BSA, glycerol, Tris buffer and/or preservatives?

A: Yes, FlexAble Antibody Labeling Kits have been validated with carriers and amine buffers. Neither BSA nor amine buffers, in any chosen concentration, interfere with the labeling. 50% glycerol as well as preservatives like sodium azide are also compatible with the kit.

Q: How many different primary antibodies can I label with one kit?

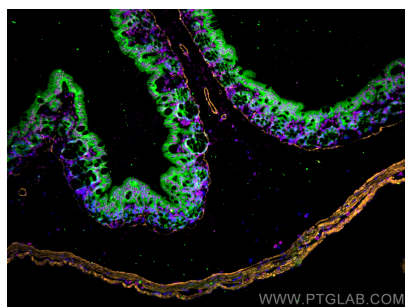
A: You can label up to 50 different antibodies with our FlexAble 50 rxn Kit, and up to 10 antibodies with our FlexAble 10 rxn Kit.

Q: Will I observe cross-reactivity/leaking when I use two FlexAble-labeled antibodies from the same species during multiplexing?

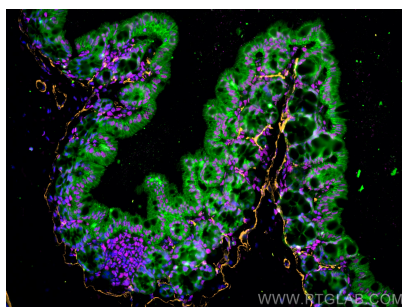
A: FlexAble labels primary antibodies with a high affinity FlexLinker. Dissociation of FlexLinker from one antibody and association to another antibody is rare. If you observe leaking, we recommend adding more FlexQuencher to remove unbound FlexLinker, or you can try sequential staining of the labeled antibodies.

[More FAQs](#)

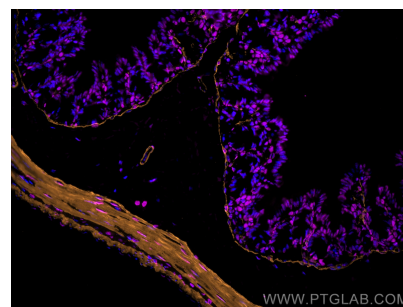
## Validation Data



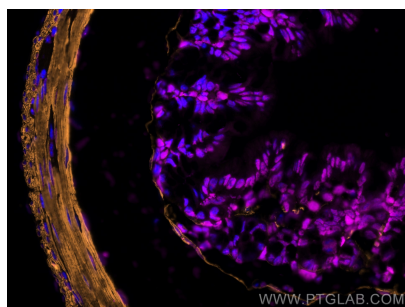
Immunofluorescence of Mouse colon: FFPE Mouse colon sections were stained with anti-FUS (11570-1-AP) labeled with FlexAble 2.0 CoraLite® Plus 647 Kit (KFA503, magenta), anti- $\alpha$ -SMA (67735-1-Ig) labeled with FlexAble 2.0 CoraLite® Plus 555 Kit (KFA522, orange), anti-E-cadherin (60335-1-Ig) labeled with FlexAble 2.0 CoraLite® Plus 488 Kit... (KFA561, green) and DAPI (blue).



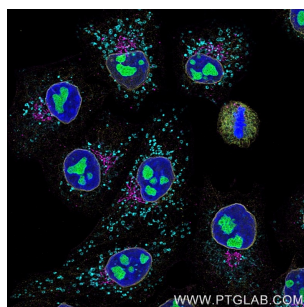
Immunofluorescence of Mouse colon: FFPE Mouse colon sections were stained with anti-FUS (11570-1-AP) labeled with FlexAble 2.0 CoraLite® Plus 647 Kit (KFA503, magenta), anti- $\alpha$ -SMA (67735-1-Ig) labeled with FlexAble 2.0 CoraLite® Plus 555 Kit (KFA522, orange), anti-E-cadherin (60335-1-Ig) labeled with FlexAble 2.0 CoraLite® Plus 488 Kit... (KFA561, green) and DAPI (blue).



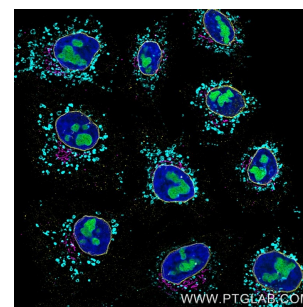
Immunofluorescence of Mouse colon: FFPE Mouse colon sections were stained with anti-FUS (11570-1-AP) labeled with FlexAble 2.0 CoraLite® Plus 647 Kit (KFA503, magenta), anti- $\alpha$ -SMA (67735-1-Ig) labeled with FlexAble 2.0 CoraLite® Plus 555 Kit (KFA522, orange) and DAPI (blue).



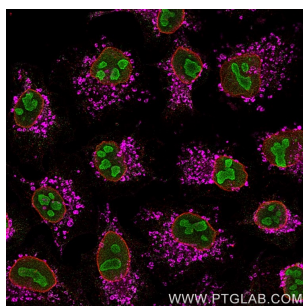
Immunofluorescence of Mouse colon: FFPE Mouse colon sections were stained with anti-FUS (11570-1-AP) labeled with FlexAble 2.0 CoraLite® Plus 647 Kit (KFA503, magenta), anti- $\alpha$ -SMA (67735-1-Ig) labeled with FlexAble 2.0 CoraLite® Plus 555 Kit (KFA522, orange) and DAPI (blue).



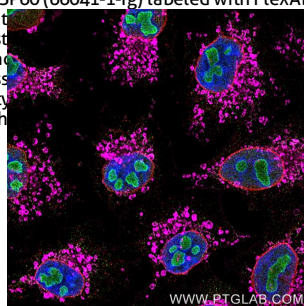
Immunofluorescence of Hela cells: PFA-fixed cells were stained with mouse IgG1 anti-B23 (60096-1-Ig) labeled with FlexAble 2.0 CoraLite® Plus 488 Kit (KFA521, green), mouse IgG1 anti-Lamin (66095-1-Ig) labeled with FlexAble 2.0 CoraLite® Plus 555 Kit (KFA522, yellow), mouse IgG1 anti-Gorasp2 (66627-1-Ig) labeled with FlexAble 2.0 CoraLite®... Plus 647 Kit (KFA523, magenta) and mouse IgG1 anti-HSP60 (66041-1-Ig) labeled with FlexAble 2.0 CoraLite® Plus 647 Kit (KFA523, magenta). Cells were not fixed. Lymphocytes were gated.



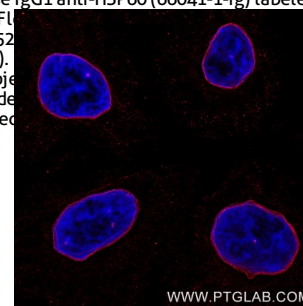
Immunofluorescence of Hela cells: PFA-fixed cells were stained with mouse IgG1 anti-B23 (60096-1-Ig) labeled with FlexAble 2.0 CoraLite® Plus 488 Kit (KFA521, green), mouse IgG1 anti-Lamin (66095-1-Ig) labeled with FlexAble 2.0 CoraLite® Plus 555 Kit (KFA522, yellow), mouse IgG1 anti-Gorasp2 (66627-1-Ig) labeled with FlexAble 2.0... CoraLite® Plus 647 Kit (KFA523, magenta) and mouse IgG1 anti-HSP60 (66041-1-Ig) labeled with FlexAble 2.0 CoraLite® Plus 647 Kit (KFA523, magenta). Cells were not fixed. Lymphocytes were gated.



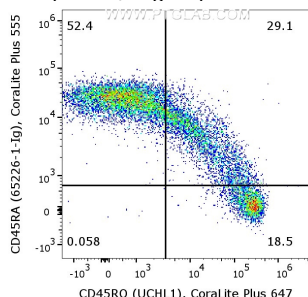
Immunofluorescence of Hela cells: PFA-fixed cells were stained with mouse IgG1 anti-B23 antibody (60096-1-Ig) labeled with Multi-rAb CoraLite® Plus 488 Goat anti-Mouse Recombinant Secondary (RGAM002, green), mouse IgG1 anti-Lamin (66095-1-Ig) labeled with FlexAble 2.0 CoraLite® Plus 555 Kit (KFA522, red) and mouse IgG1 anti-ATP5O... (66696-1-Ig) labeled with FlexAble 2.0 CoraLite® Plus 647 Kit (KFA523, magenta).



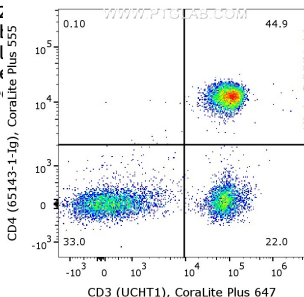
Immunofluorescence of Hela cells: PFA-fixed cells were stained with mouse IgG1 anti-B23 antibody (60096-1-Ig) labeled with Multi-rAb CoraLite® Plus 488 Goat anti-Mouse Recombinant Secondary (RGAM002, green), mouse IgG1 anti-Lamin antibody (66095-1-Ig) labeled with FlexAble 2.0 CoraLite® Plus 555 Kit (KFA522, red) and mouse IgG1 anti-ATP5O antibody (66696-1-Ig) labeled with FlexAble 2.0 CoraLite® Plus 647 Kit (KFA523, magenta). Cells were not fixed. Lymphocytes were gated.



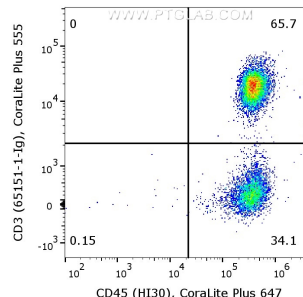
Immunofluorescence of Hela cells: PFA-fixed cells were stained with mouse IgG1 anti-Lamin antibody (66095-1-Ig) labeled with FlexAble 2.0 CoraLite® Plus 555 Kit (KFA522, red). Cell nuclei were stained with DAPI (blue). Confocal images were acquired with a 63x oil objective and post-processed. Images were recorded at the Core Facility Bioimaging at... the Biomedical Center, LMU Munich.



1X10<sup>6</sup> human PBMCs were surface co-stained with CoraLite® Plus 647 Anti-Human CD45RO (CL647-65150, Clone:UCHL1), and Anti-Human CD45RA (65226-1-Ig, Clone:F8-11-13) labeled with FlexAble 2.0 CoraLite® Plus 555 Kit (KFA522). Cells were not fixed. Lymphocytes were gated.



1X10<sup>6</sup> human PBMCs were surface co-stained with CoraLite® Plus 647 Anti-Human CD3 (CL647-65151, Clone:UCHT1), and Anti-Human CD4 (65143-1-Ig, Clone:RPA-T4) labeled with FlexAble 2.0 CoraLite® Plus 555 Kit (KFA522). Cells were not fixed. Lymphocytes were gated.



1X10<sup>6</sup> human PBMCs were surface co-stained with CoraLite® Plus 647 Anti-Human CD45 (CL647-65109, Clone:HI30), and Anti-Human CD3 (65151-1-Ig, Clone:UCHT1) labeled with FlexAble 2.0 CoraLite® Plus 555 Kit (KFA522). Cells were not fixed. Lymphocytes were gated.

For technical support and original validation data for this product please contact

T: 027-87531629

E: Proteintech-CN@ptglab.com

W: ptgcn.com

This product is exclusively available under Proteintech Group brand and is not available to purchase from any other manufacturer.